

MANUAL DE PRODUCTO



A 65^{RPT}
ALFIL

Practicable de rotura con excelentes prestaciones térmicas

extruded by
 Hydro

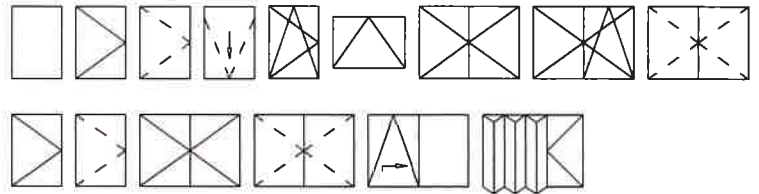
 Alfil

SERIE A65RPT

CARACTERÍSTICAS GENERALES

- Ancho de marco: 65 mm.
- Ancho de hoja: 72 mm.
- RPT con poliamida de 35 mm.
- Acristamiento máximo: 56 mm.
- Espesor general: 1,5 mm.

POSIBILIDADES CONSTRUCTIVAS

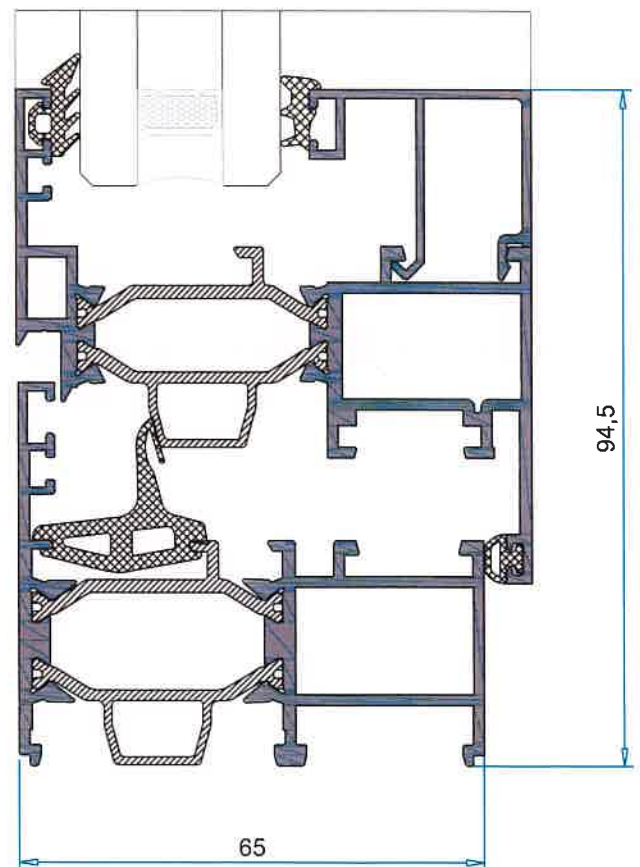
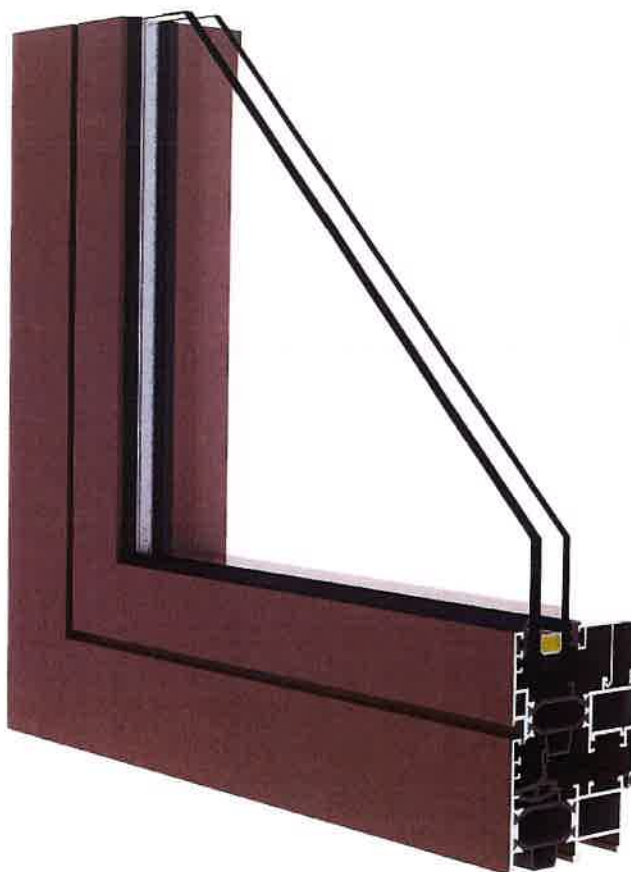


PRESTACIONES

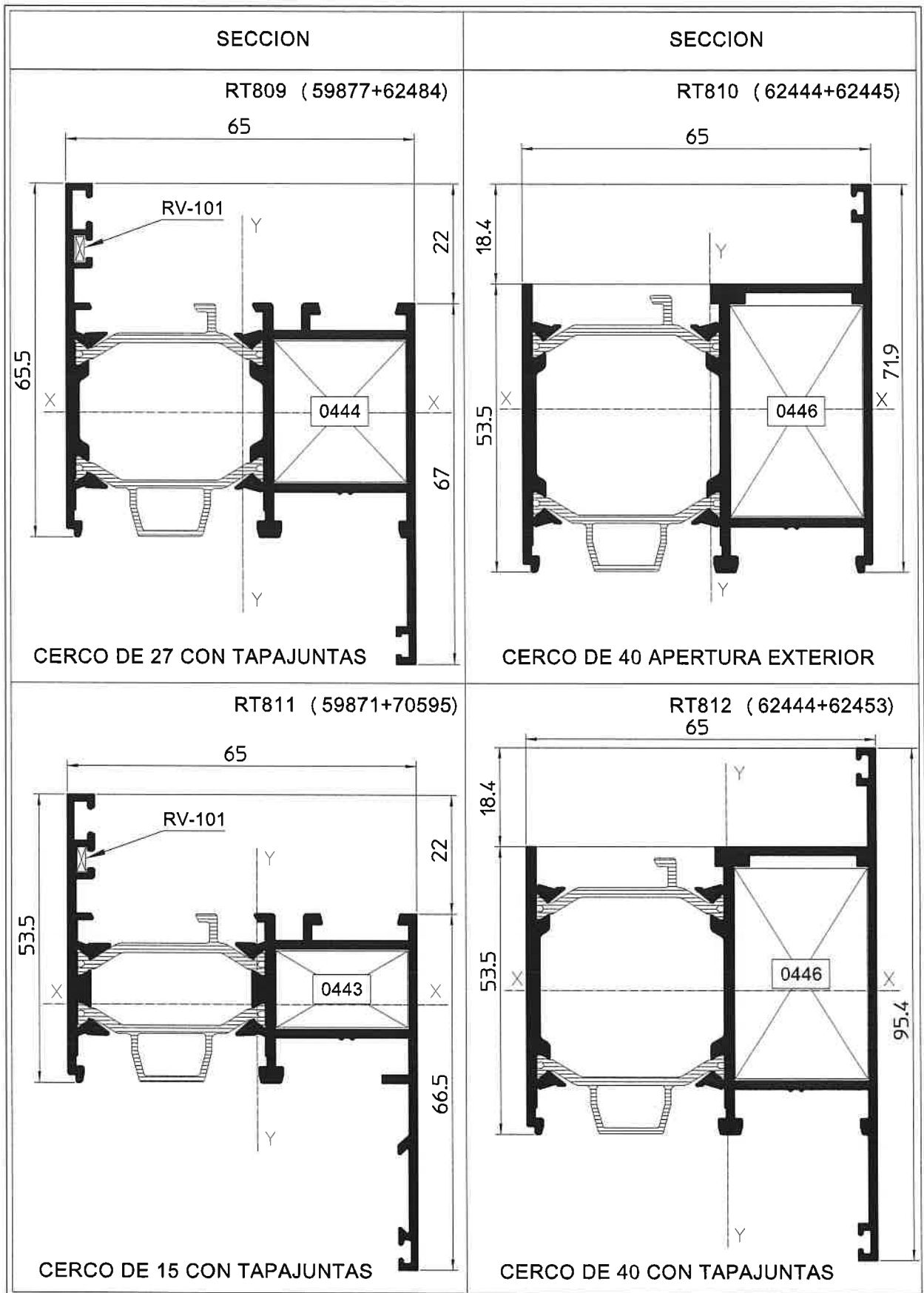
- Permeabilidad al aire: **Clase 4** (UNE-EN 12207:2000)
- Estanquidad al agua: **Clase E900** (UNE-EN 12208:2000)
- Resistencia al viento: **Clase C5** (UNE-EN 12210:2000)
- Transmitancia de marco (U_h, m): **2,0 W/m²K*** (UNE-EN 10077-2:2012)
- Transmitancia de ventana (U_h): **1,1 W/m²K*** (UNE-EN 10077-1:2010)
- Índice de aislamiento acústico: **Rw=42(-2;-5)dB****

*Balconera de 6,2 m² (UVA 4/12/4/12/4 BE)

**Vidrio 8.6-20-4.4 Argón.

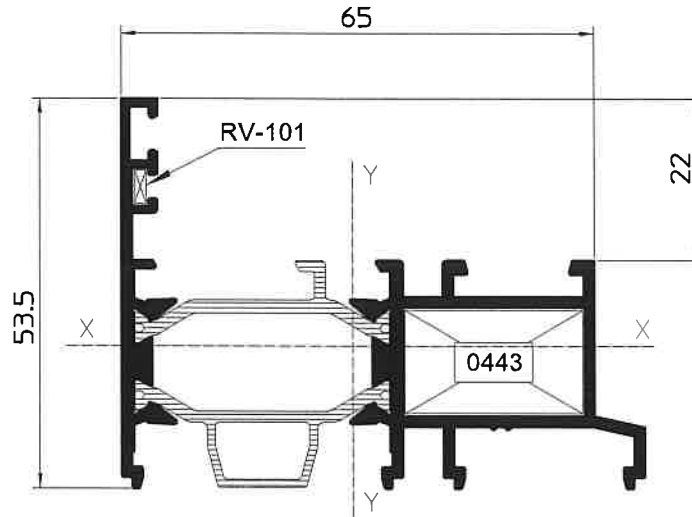


SECCION	SECCION
<p>RT805 (59871+59872)</p> <p>CERCO DE 15</p>	<p>RT806 (59871+61465)</p> <p>CERCO DE 15 CON TAPAJUNTAS</p>
<p>RT807 (59871+62332)</p> <p>CERCO DE 15 TAPAJUNTAS CON RESALTE</p>	<p>RT808 (59877+59878)</p> <p>CERCO DE 27</p>



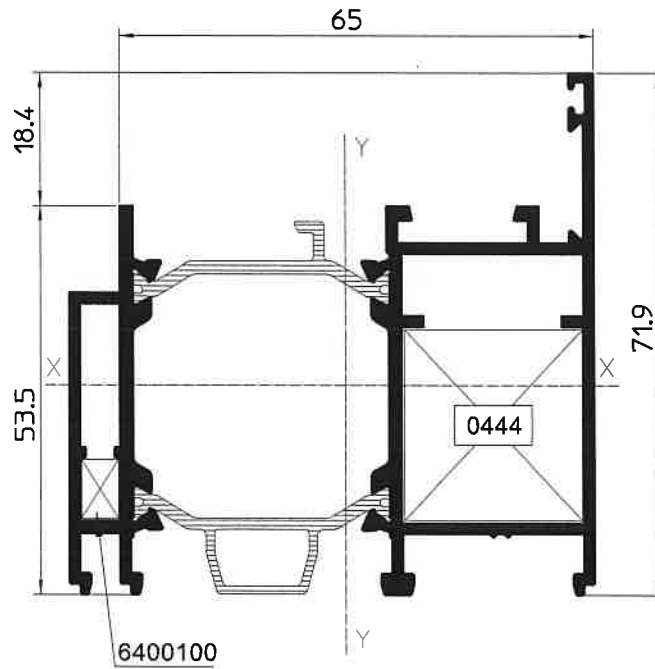
SECCION

RT813 (59871+66388)



CERCO DE 15 COPLANAR

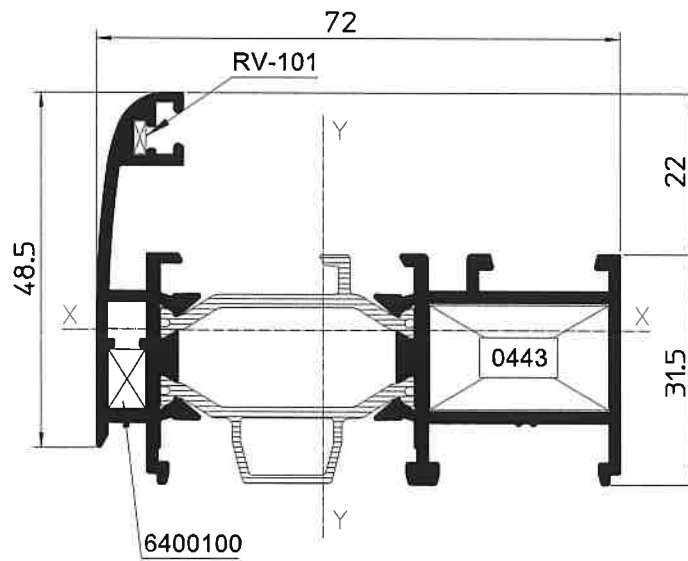
RT814 (66389+66390)



CERCO COPLANAR DE APERTURA EXTERIOR

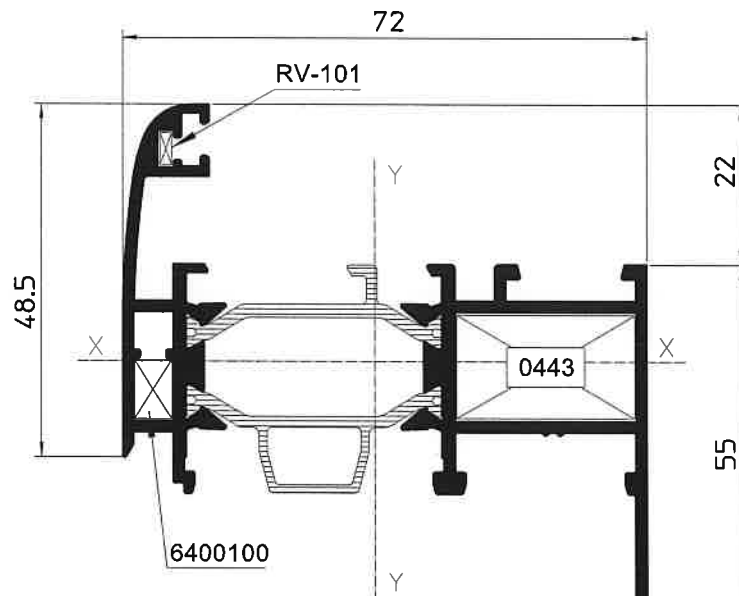
SECCION

RT815 (70362+59872)

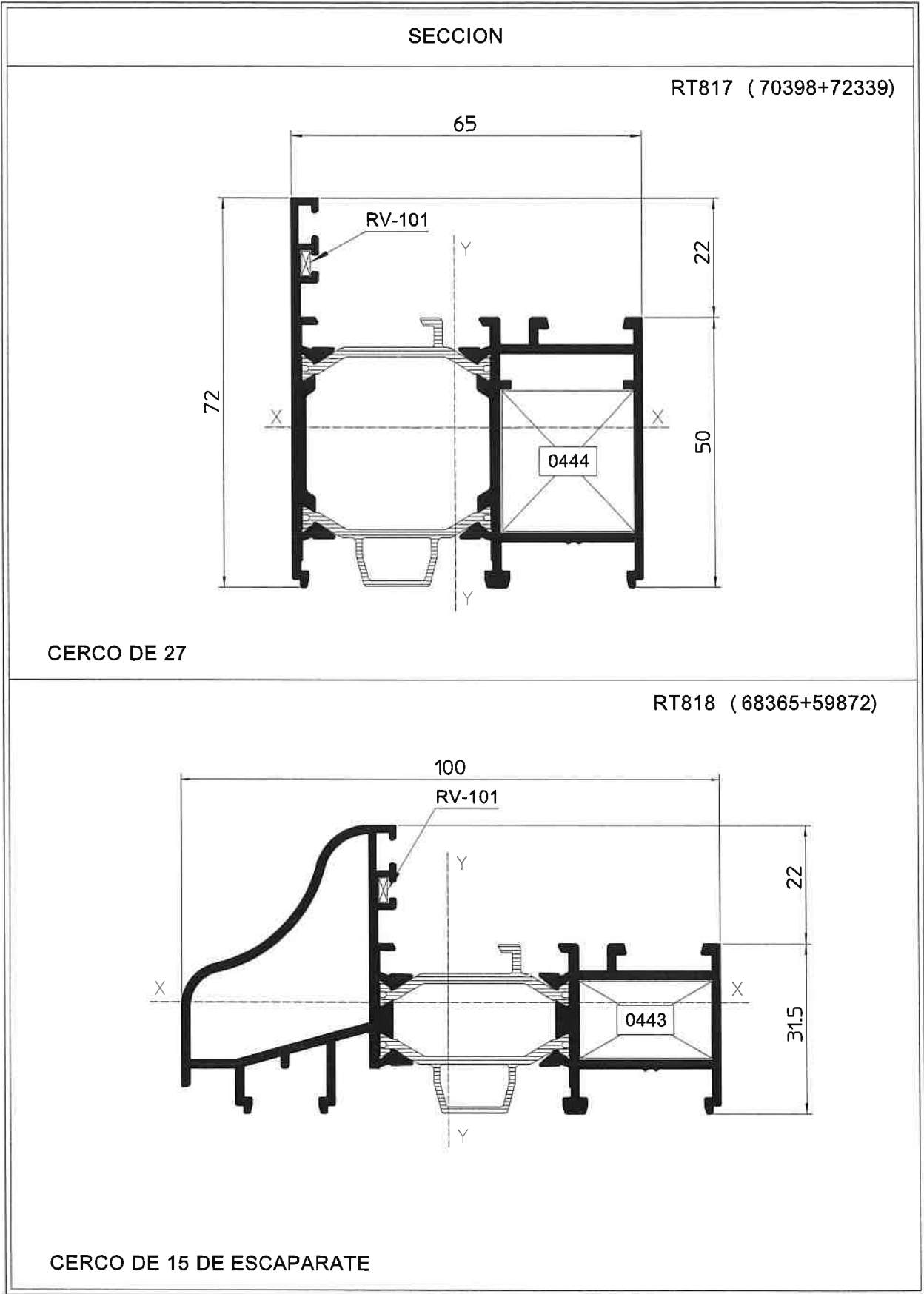


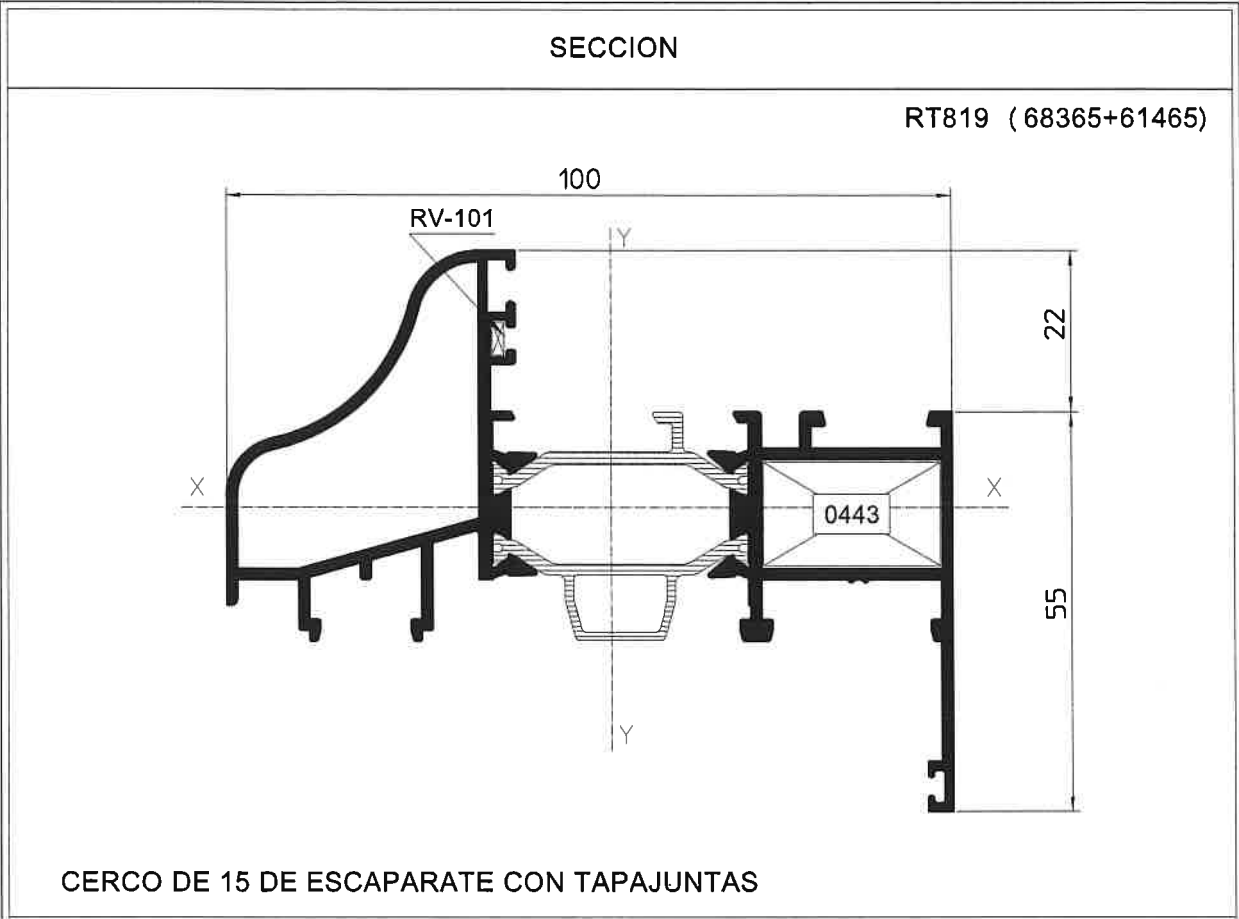
CERCO DE 15 OVAL

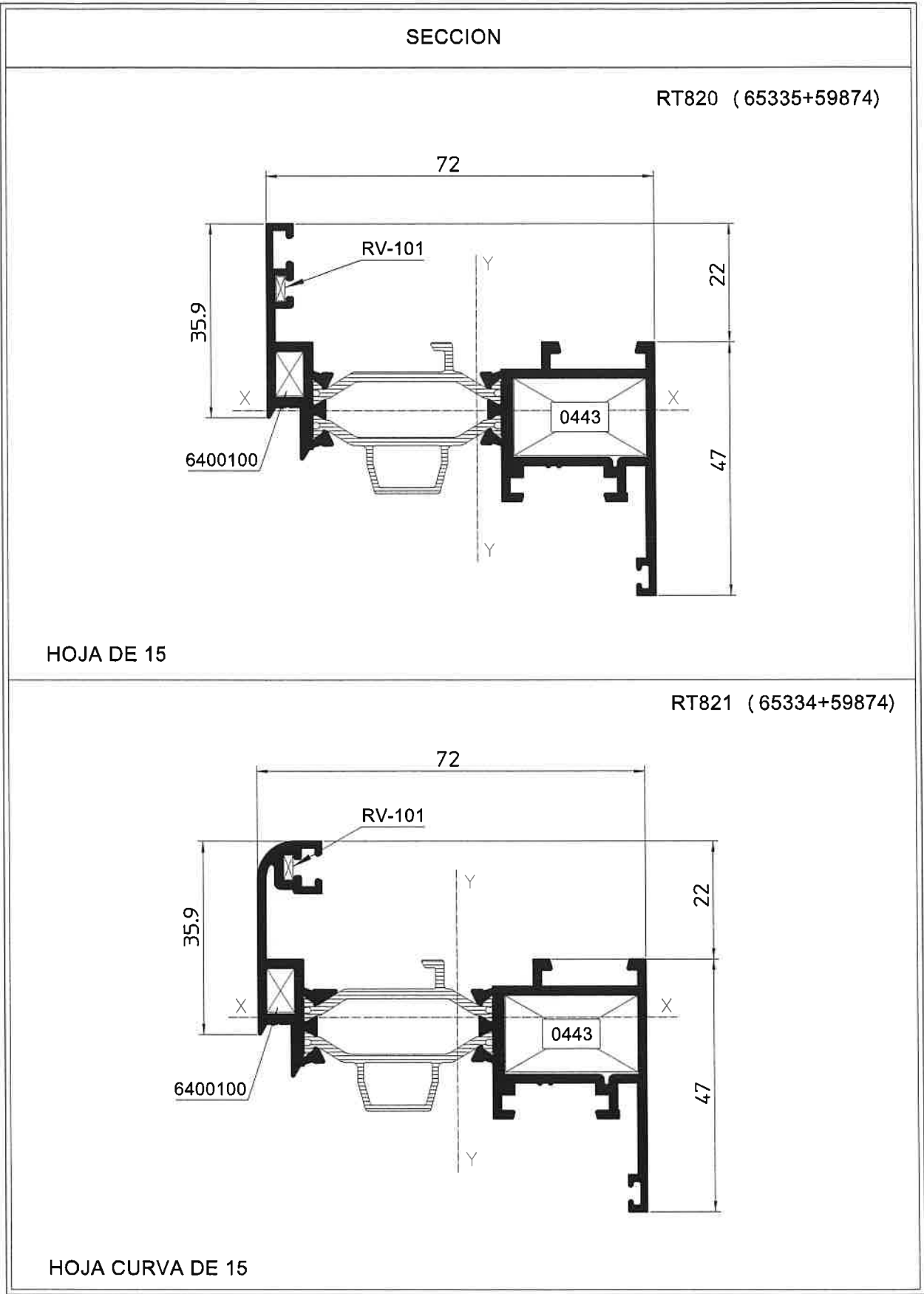
RT816 (70362+61465)

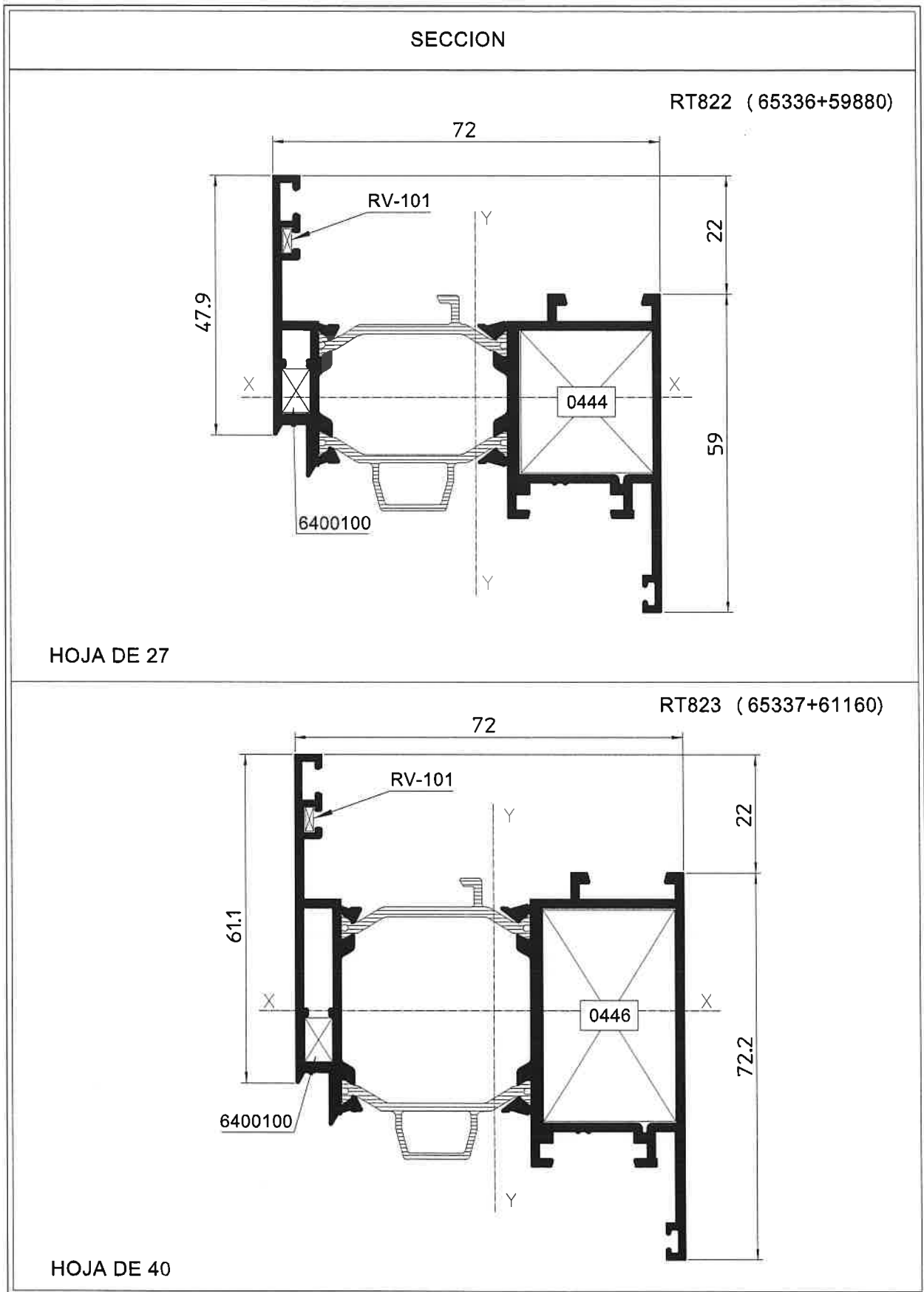


CERCO DE 15 OVAL CON TAPAJUNTAS



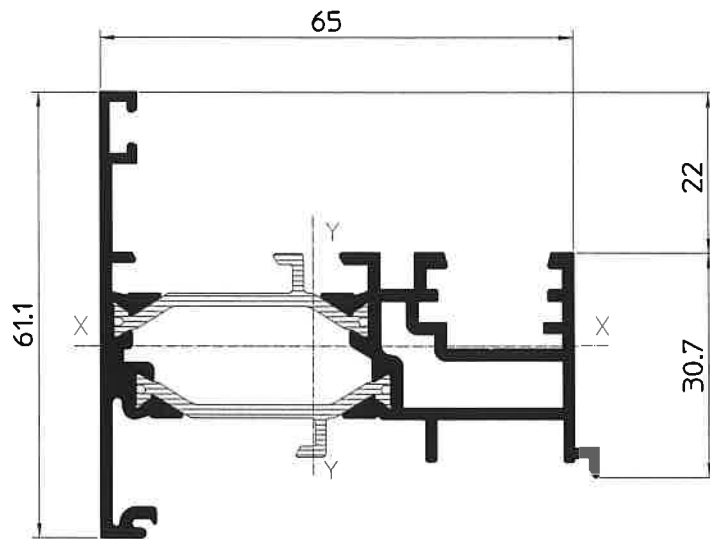






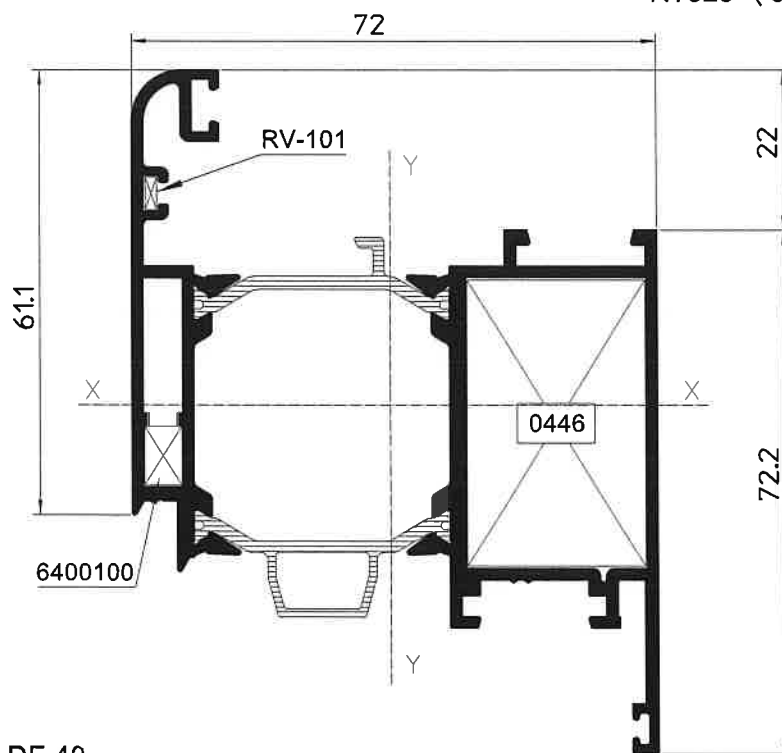
SECCION

RT824 (73.306+73.305)



INVERSOR

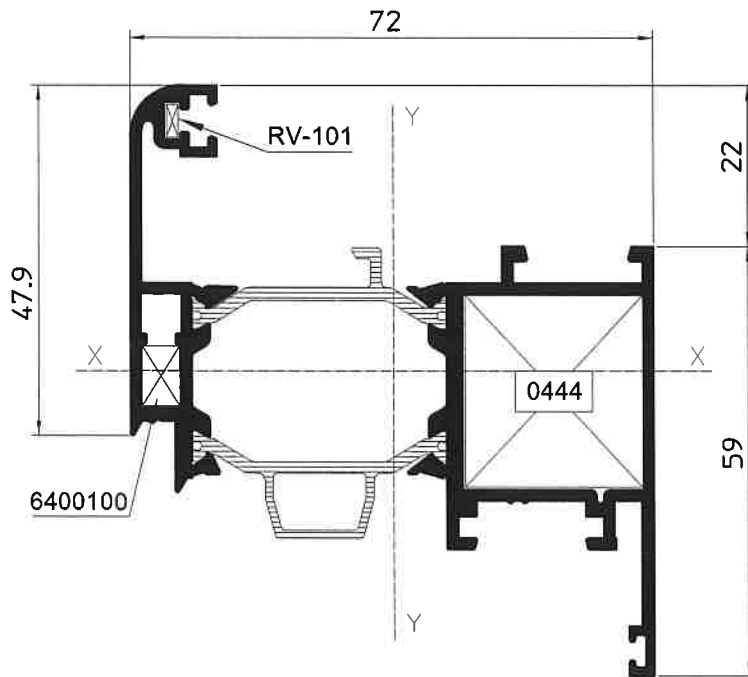
RT825 (65323+61160)



HOJA CURVA DE 40

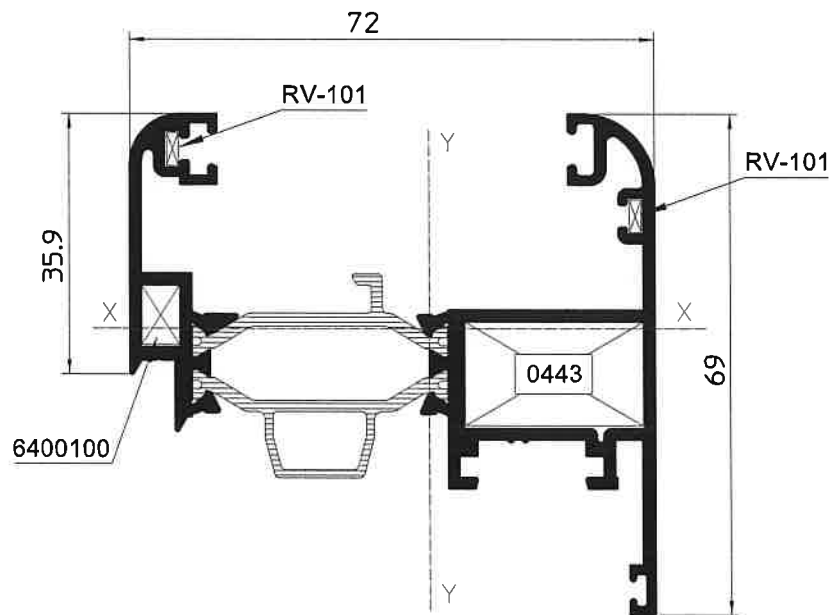
SECCION

RT826 (66684+59880)

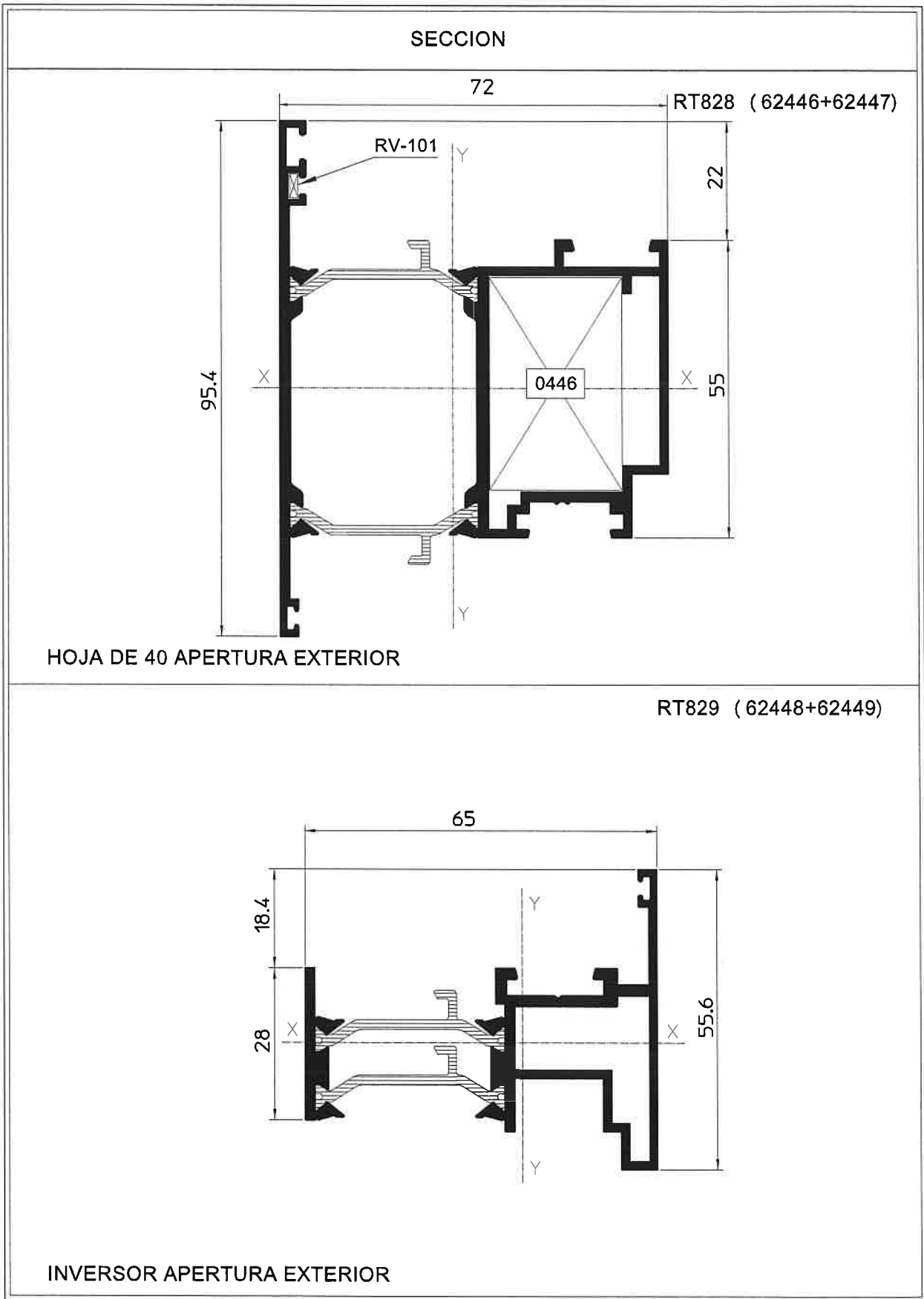


HOJA CURVA DE 27

RT827 (65334+66458)

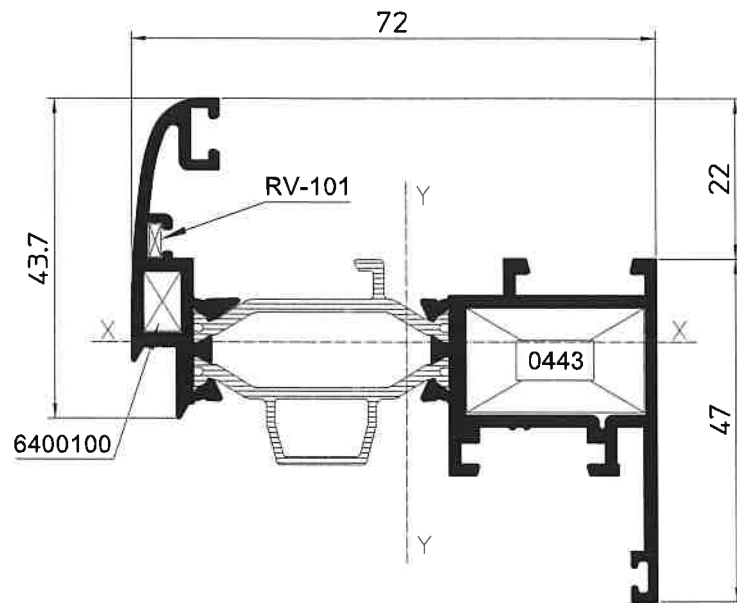


HOJA CURVA SIN JUNQUILLO



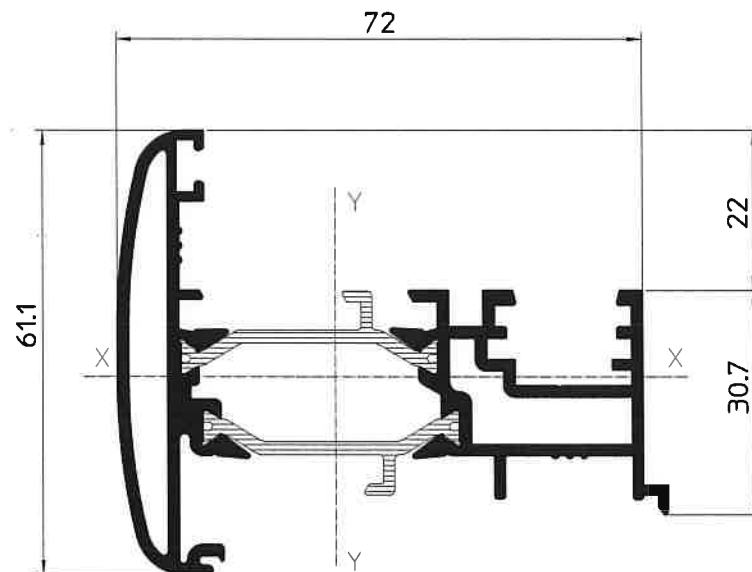
SECCION

RT830 (70361+59874)

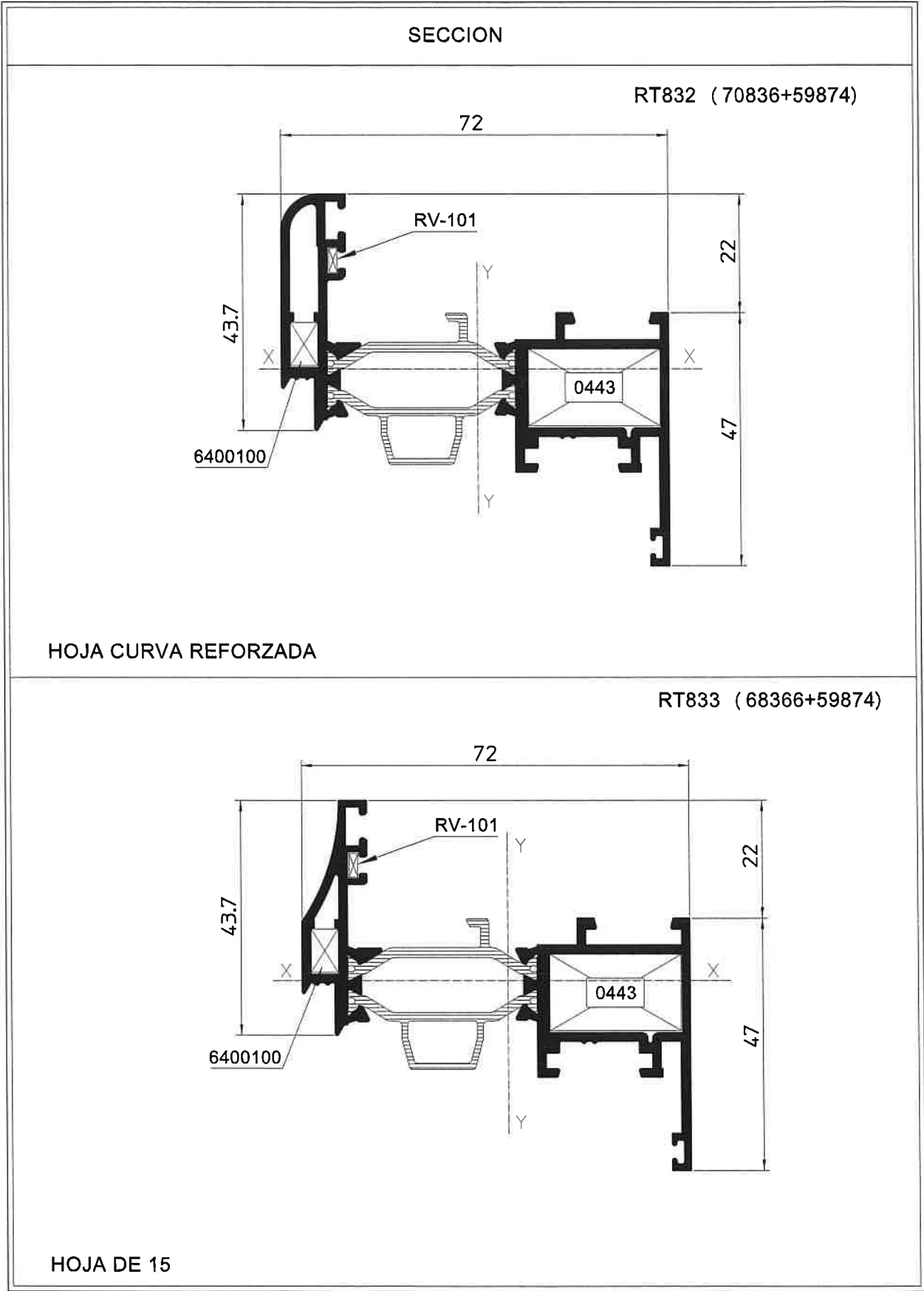


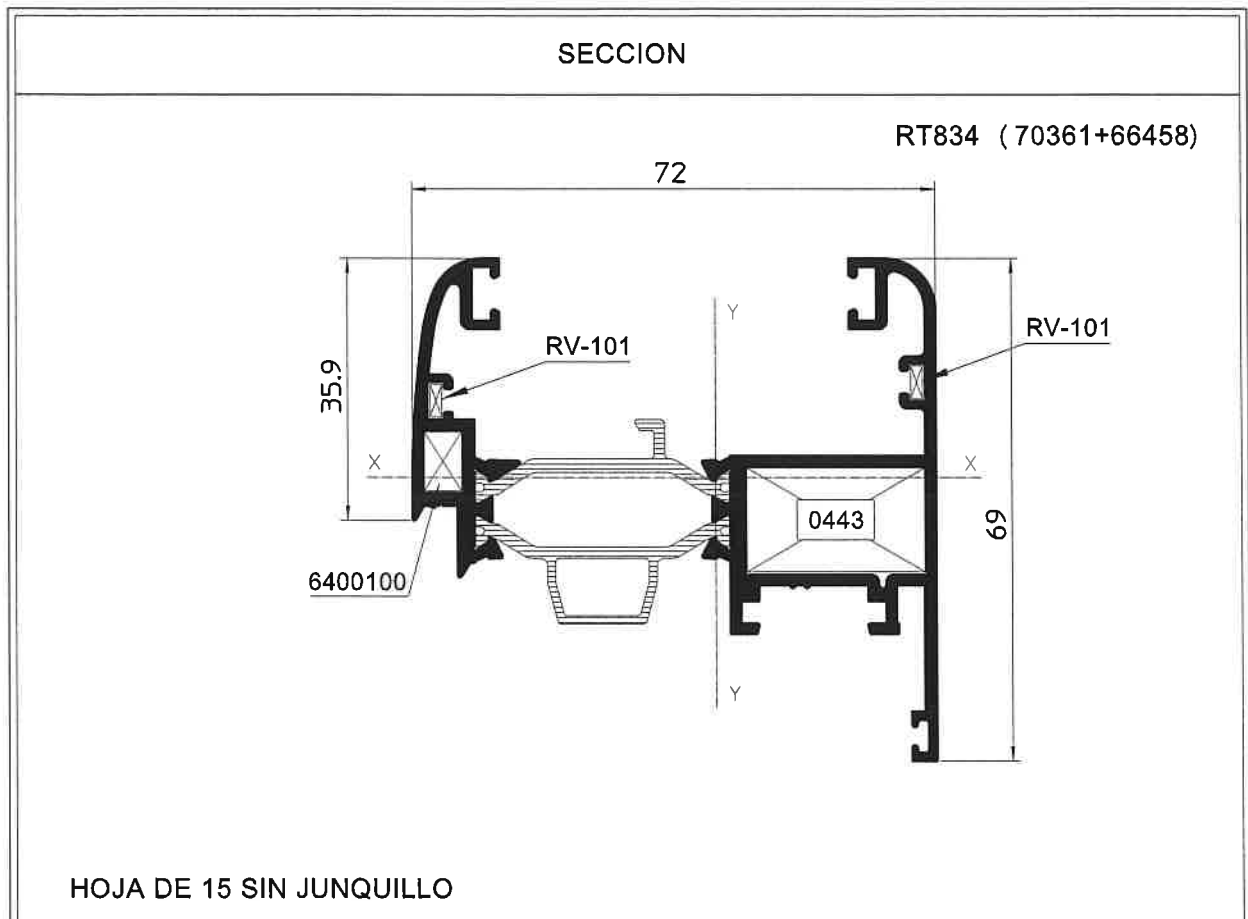
HOJA DE 15 OVAL

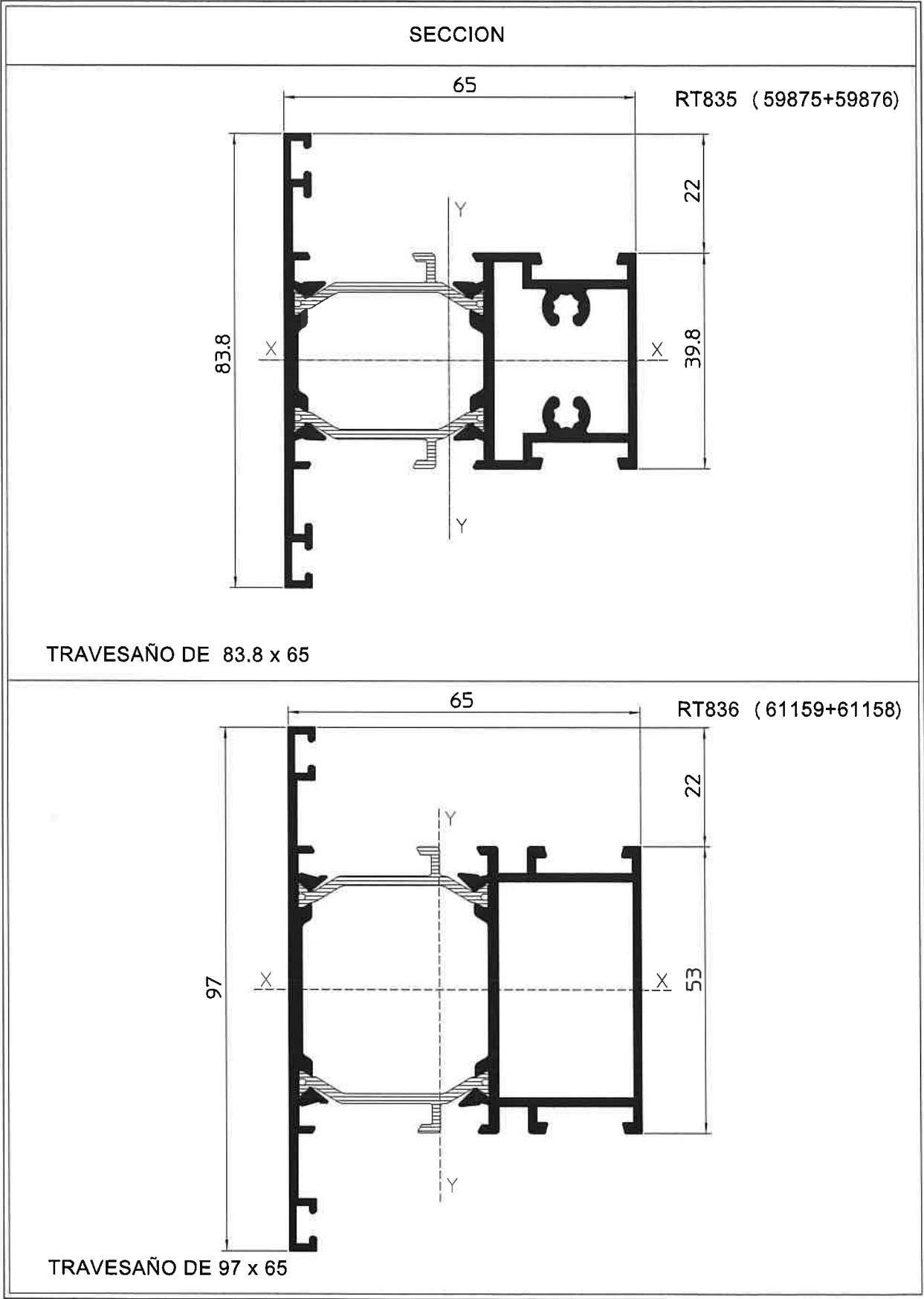
RT831 (A65-08+A65-06)

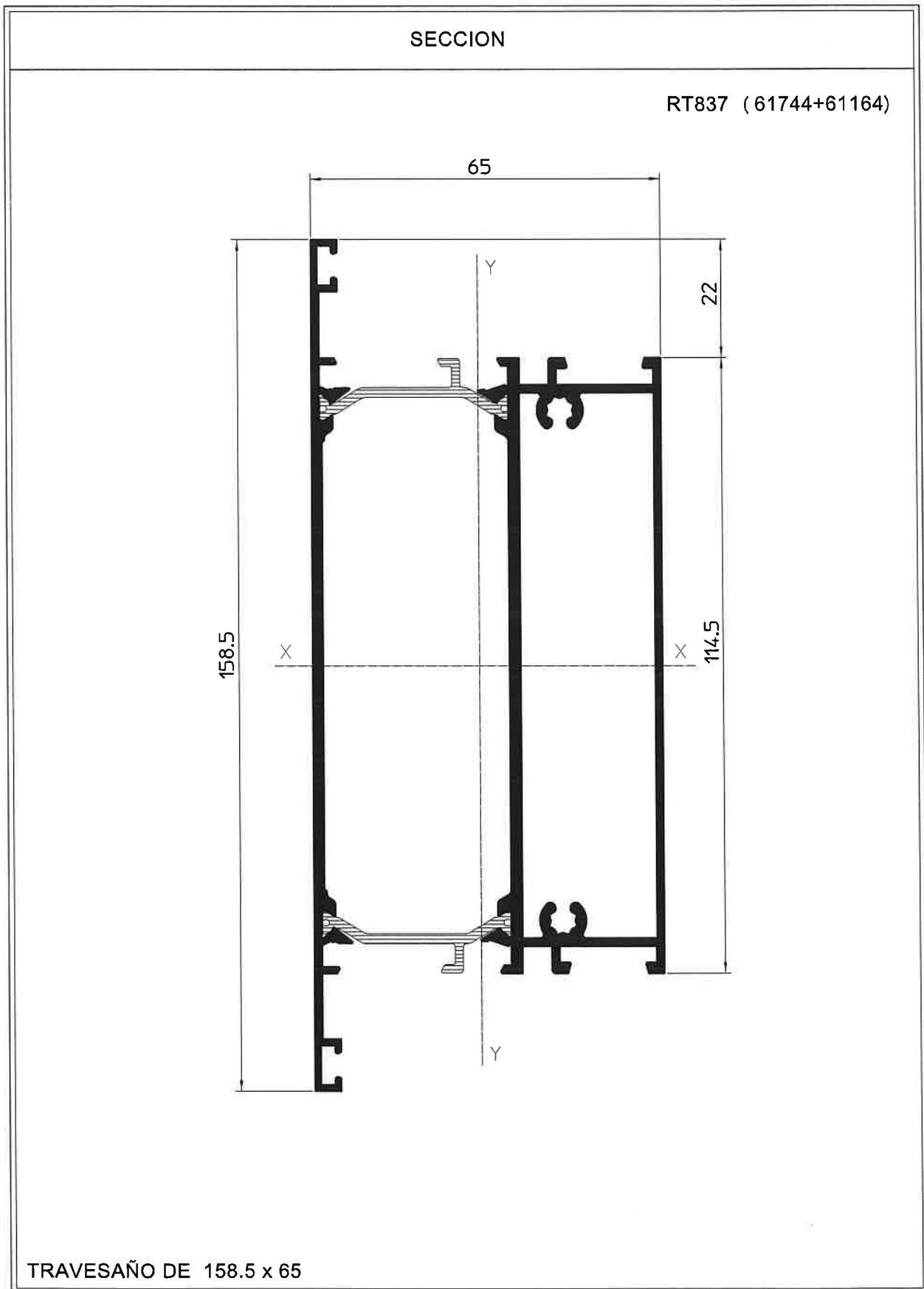


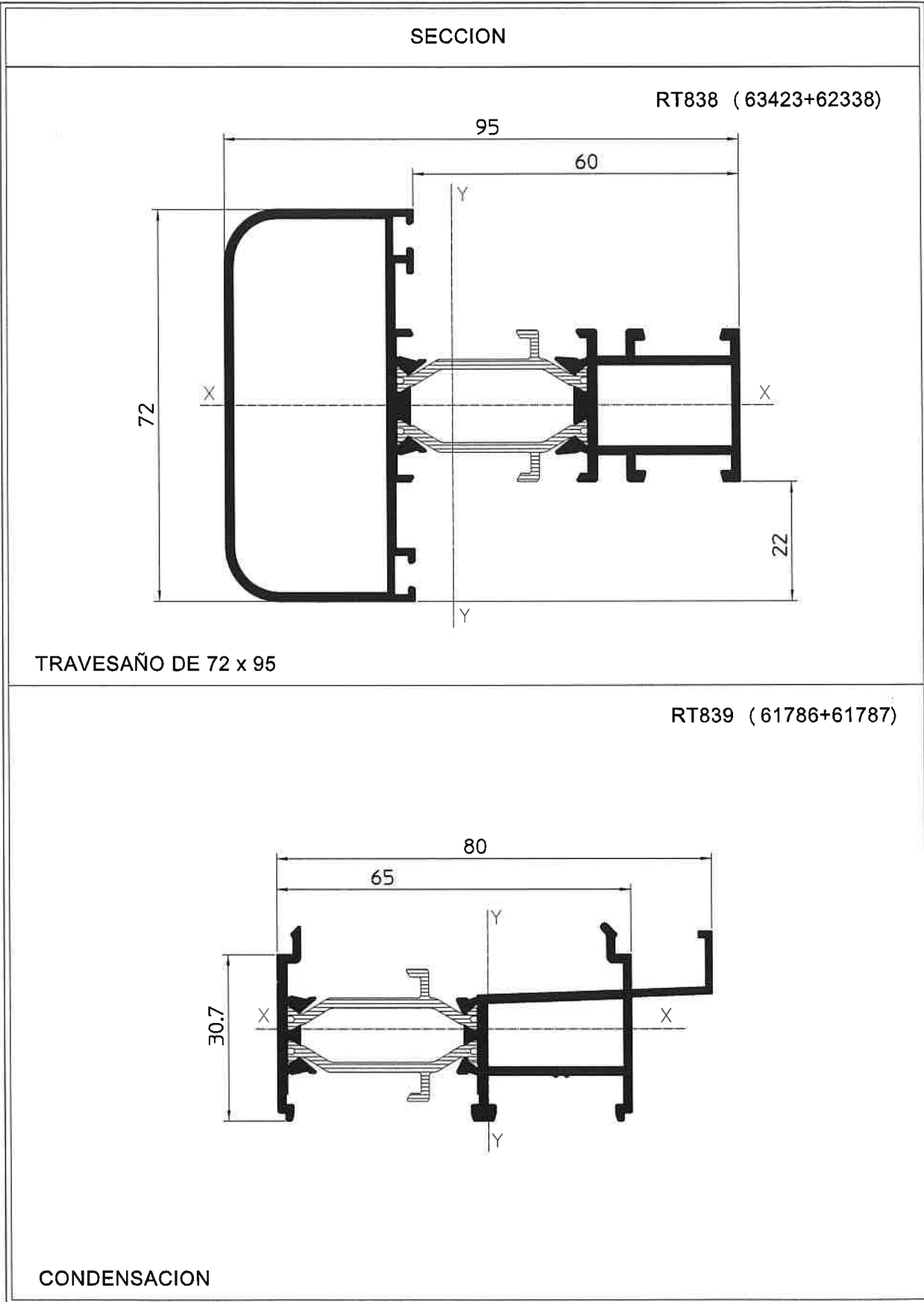
INVERSOR OVAL

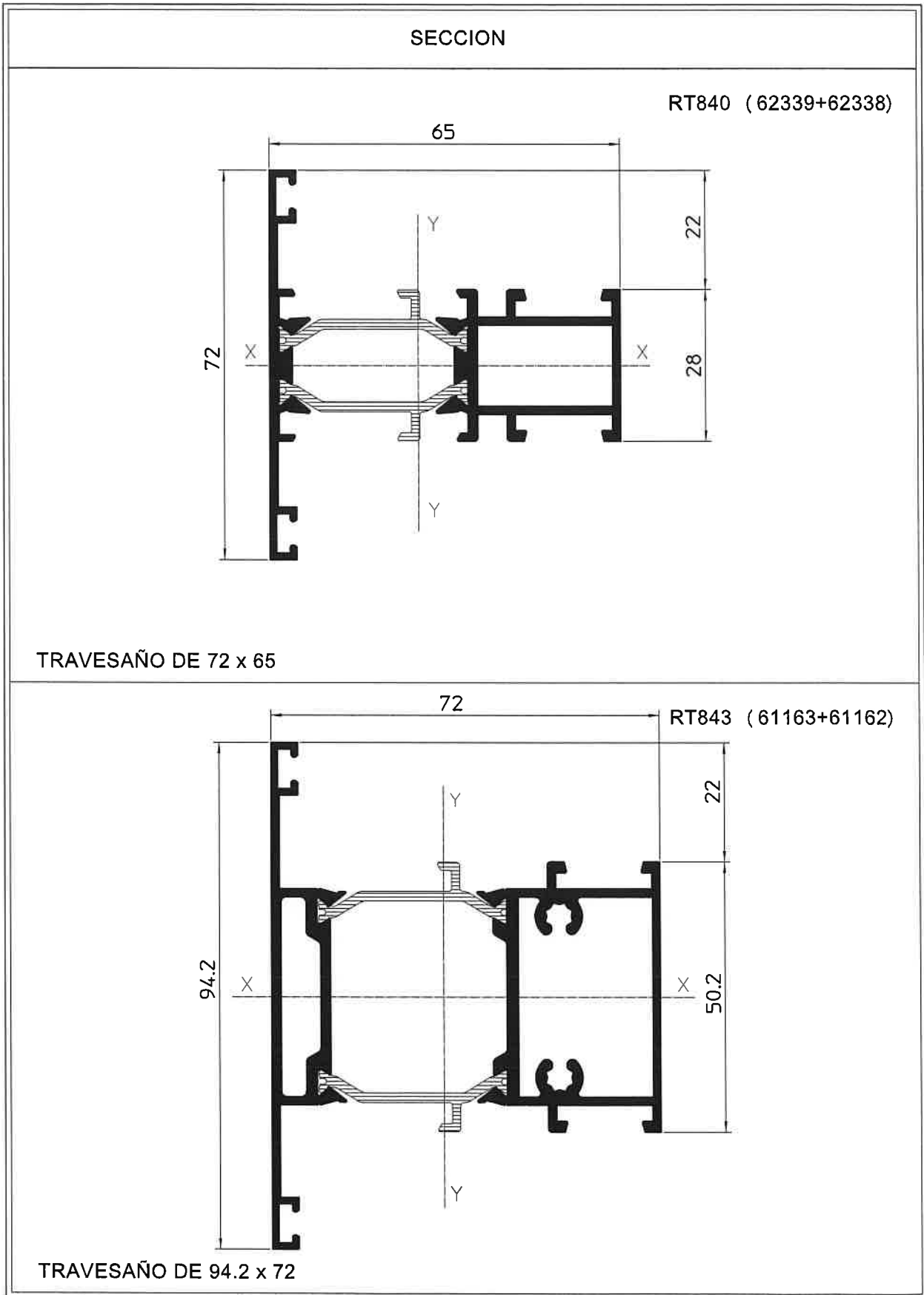


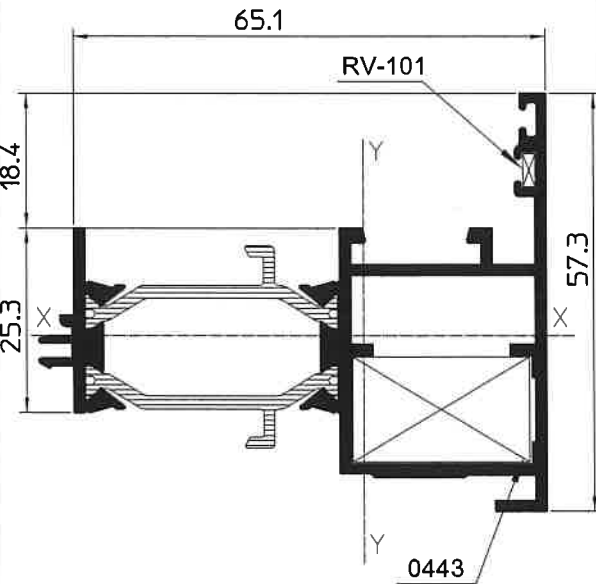
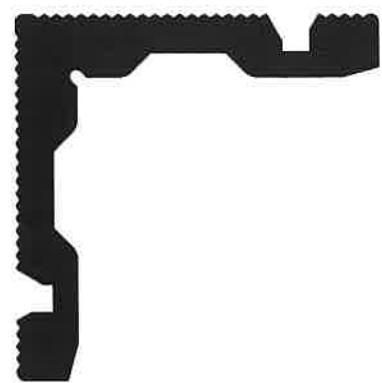
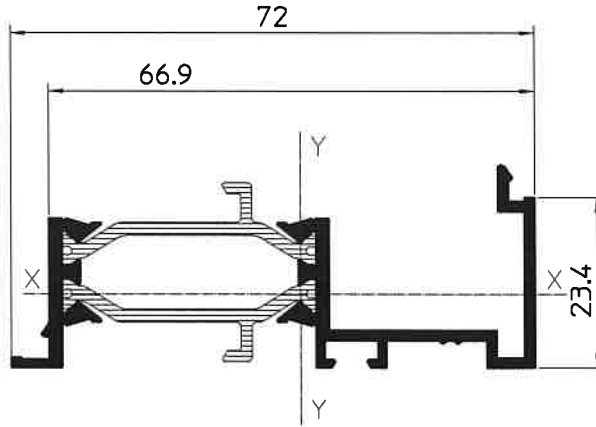
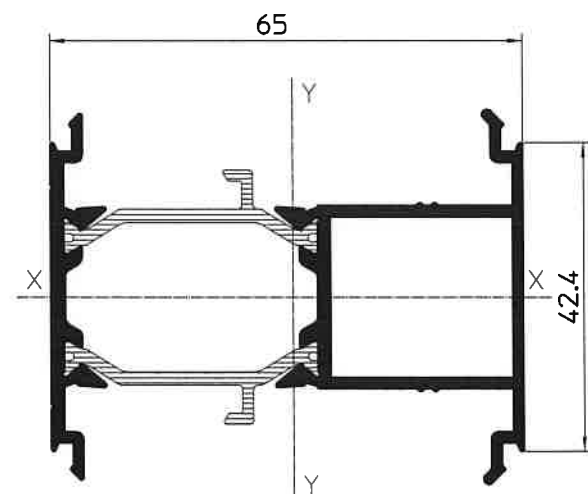


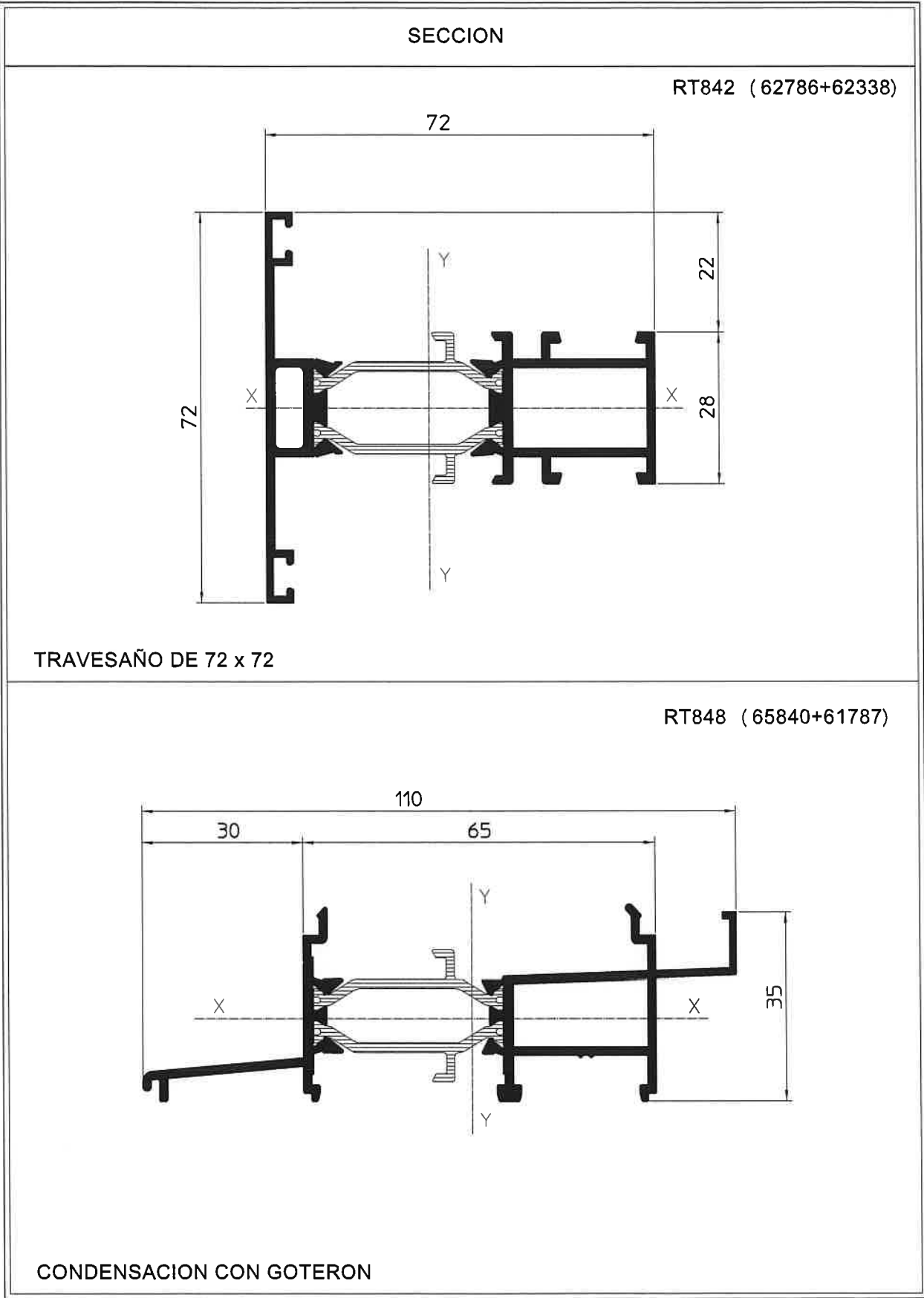






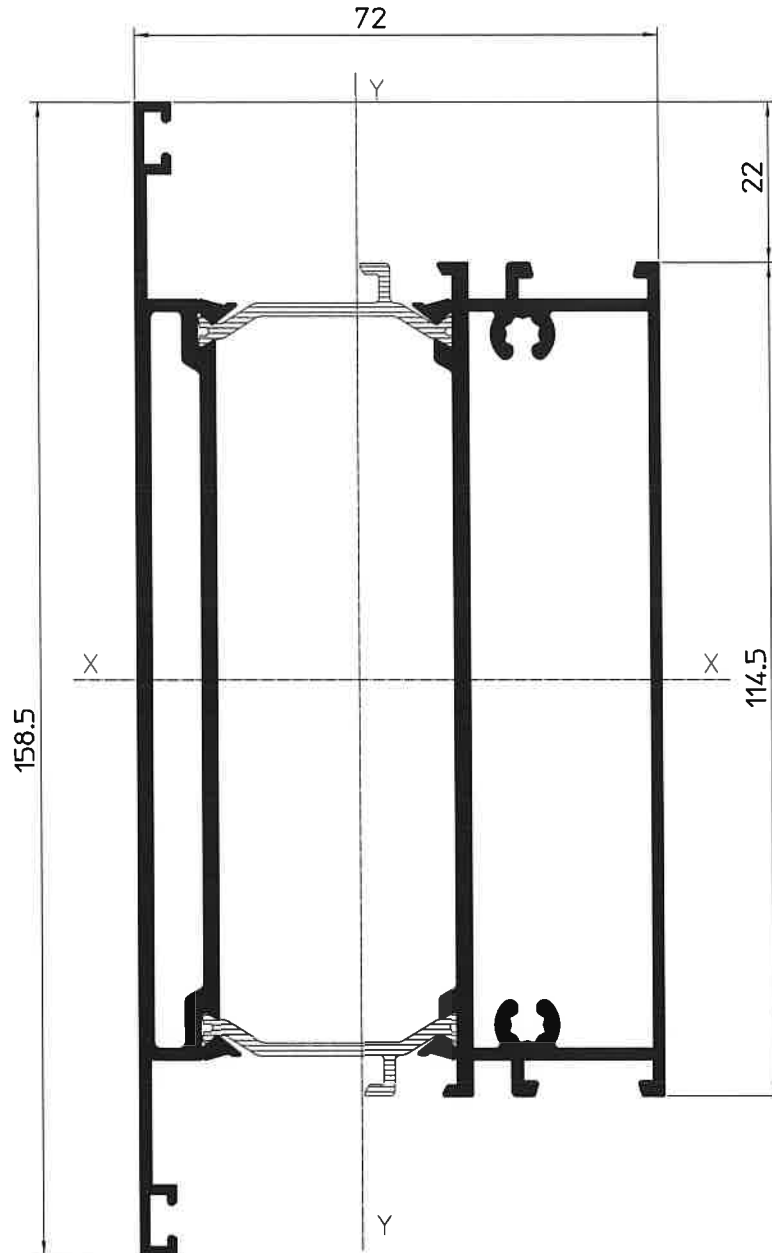


SECCION	SECCION
<p style="text-align: center;">RT841 (63551+63552)</p>  <p style="text-align: center;">INVERSOR APERTURA EXTERIOR</p>	<p style="text-align: right;">65369</p>  <p style="text-align: center;">ESCUADRA DE REFUERZO</p>
<p style="text-align: center;">RT846 (62451+62452)</p>  <p style="text-align: center;">REMATE INFERIOR DE HOJAS</p>	<p style="text-align: center;">RT847 (67298+67299)</p>  <p style="text-align: center;">UNION DE CERCOS</p>

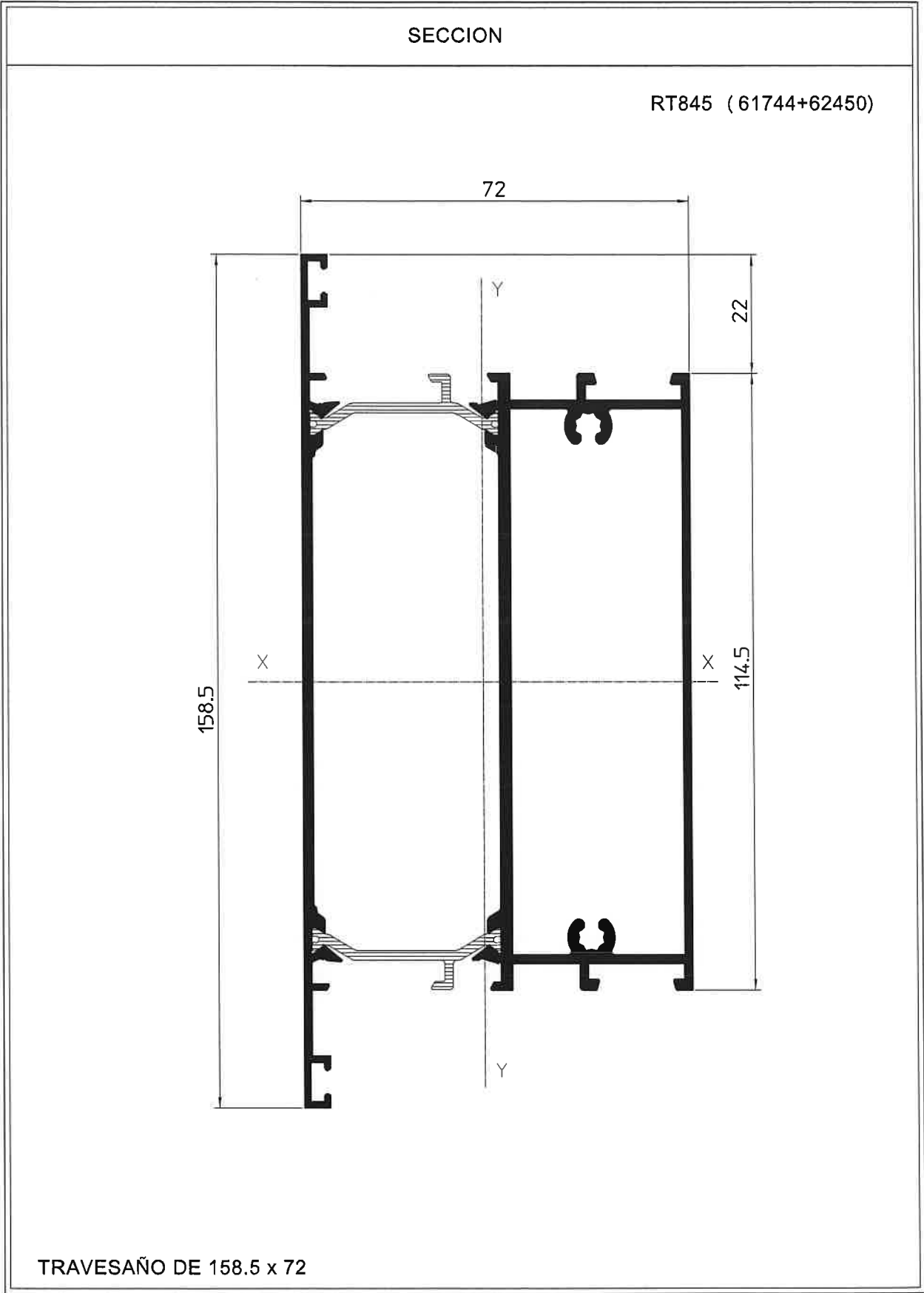


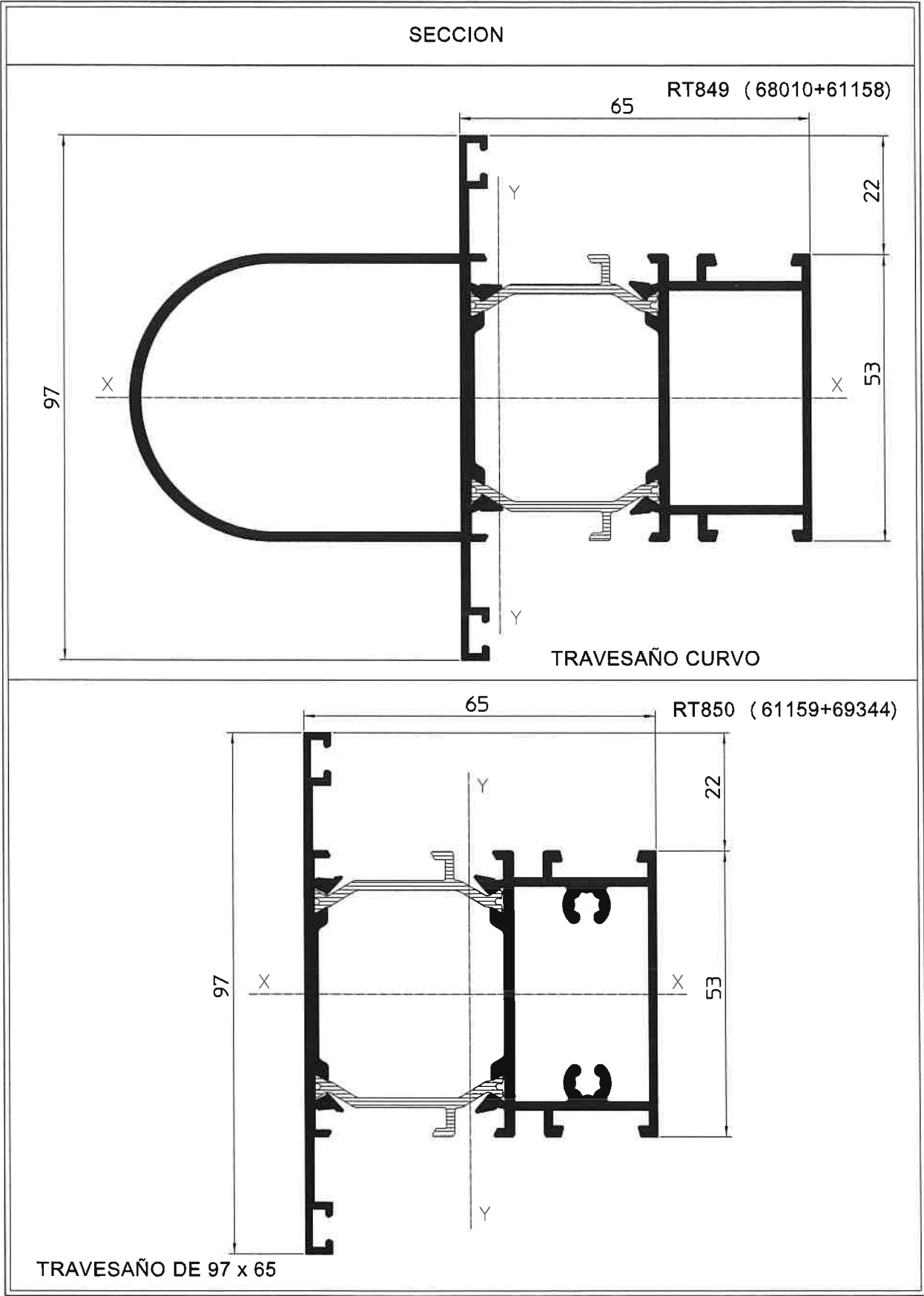
SECCION

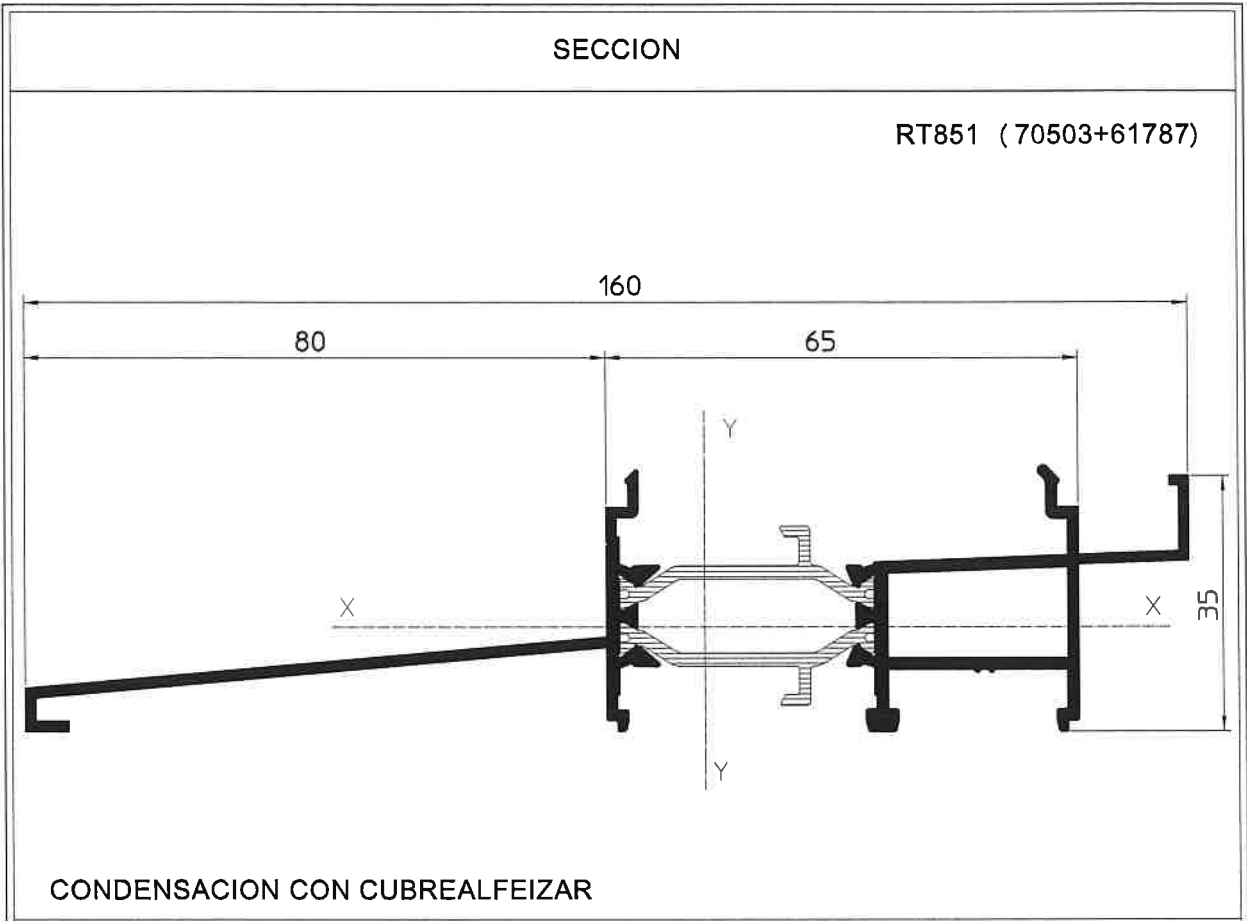
RT844 (61165+61164)

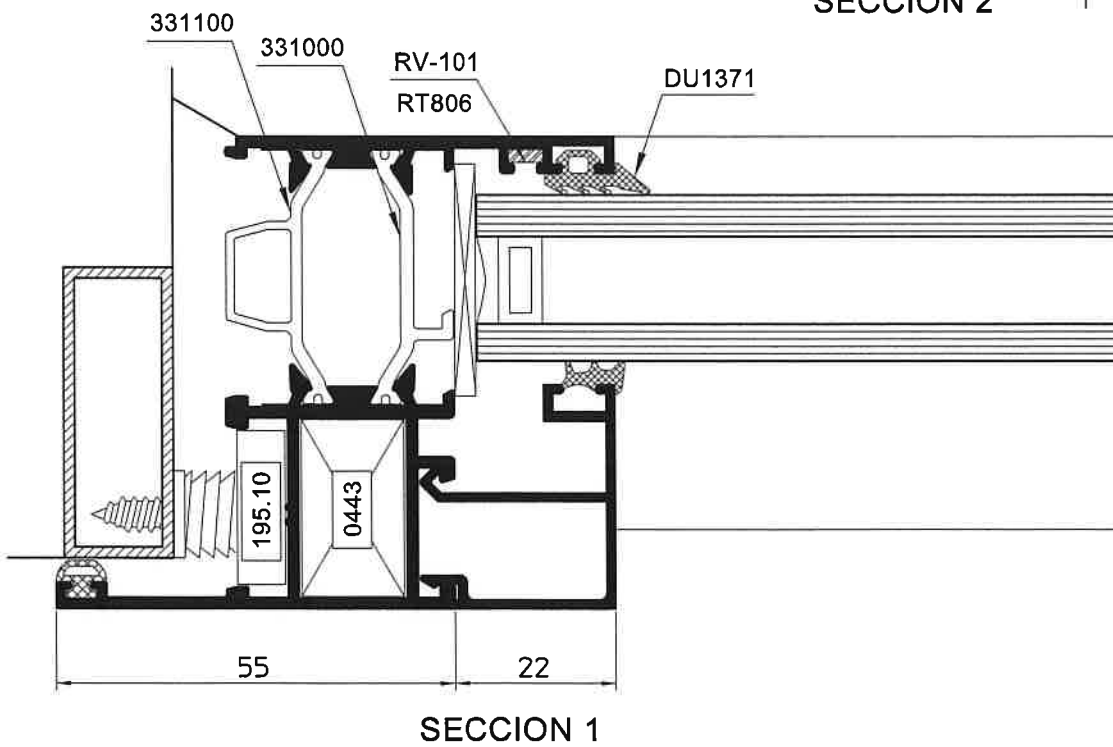
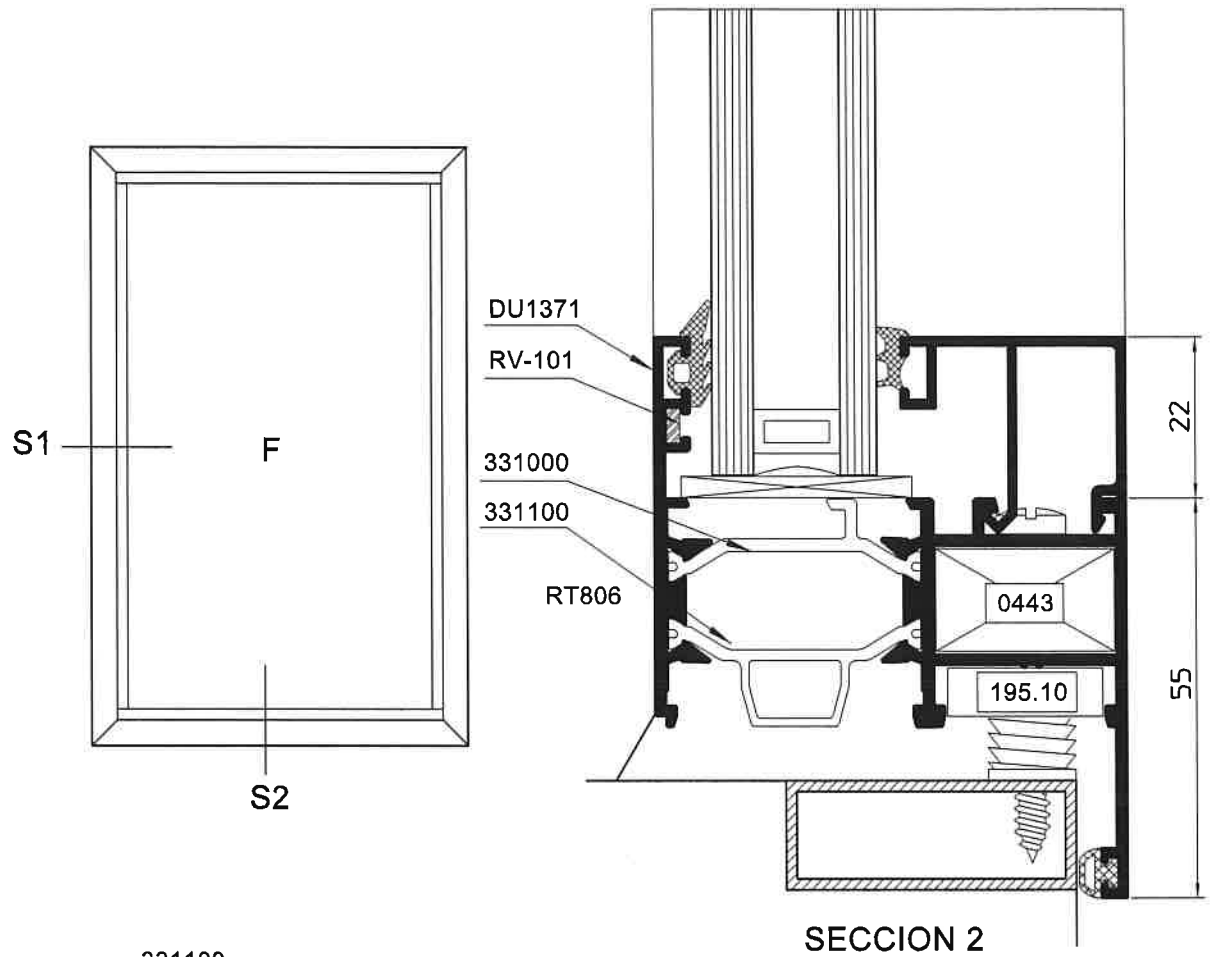


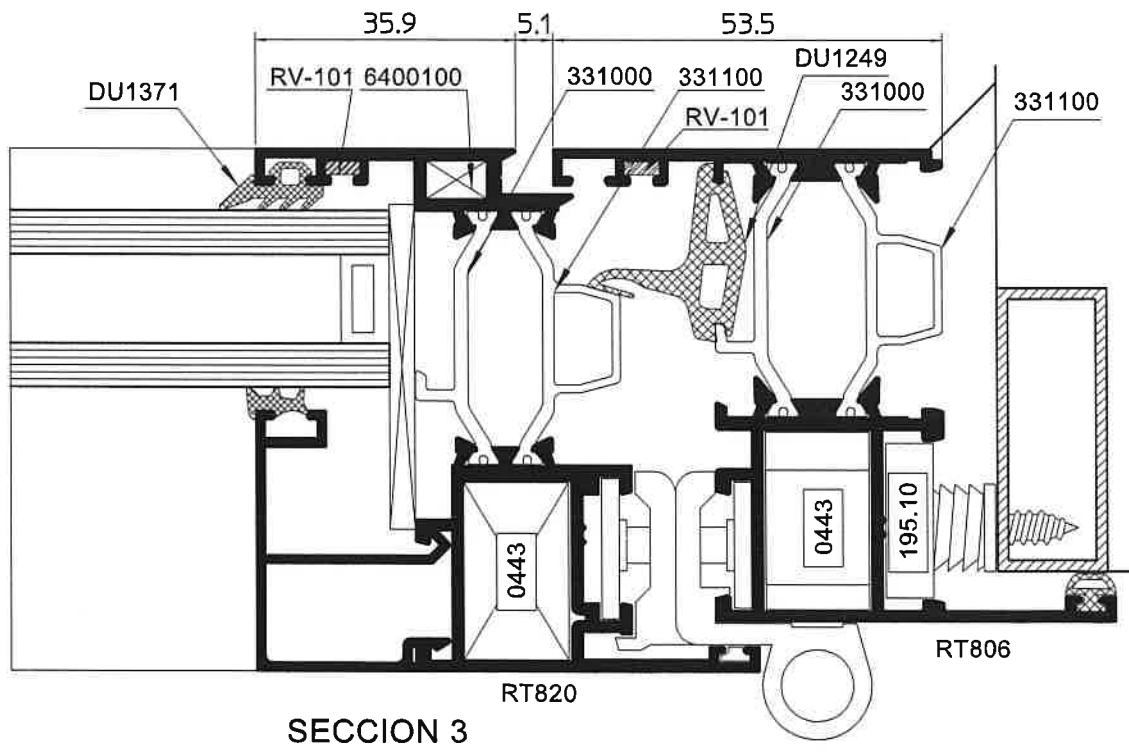
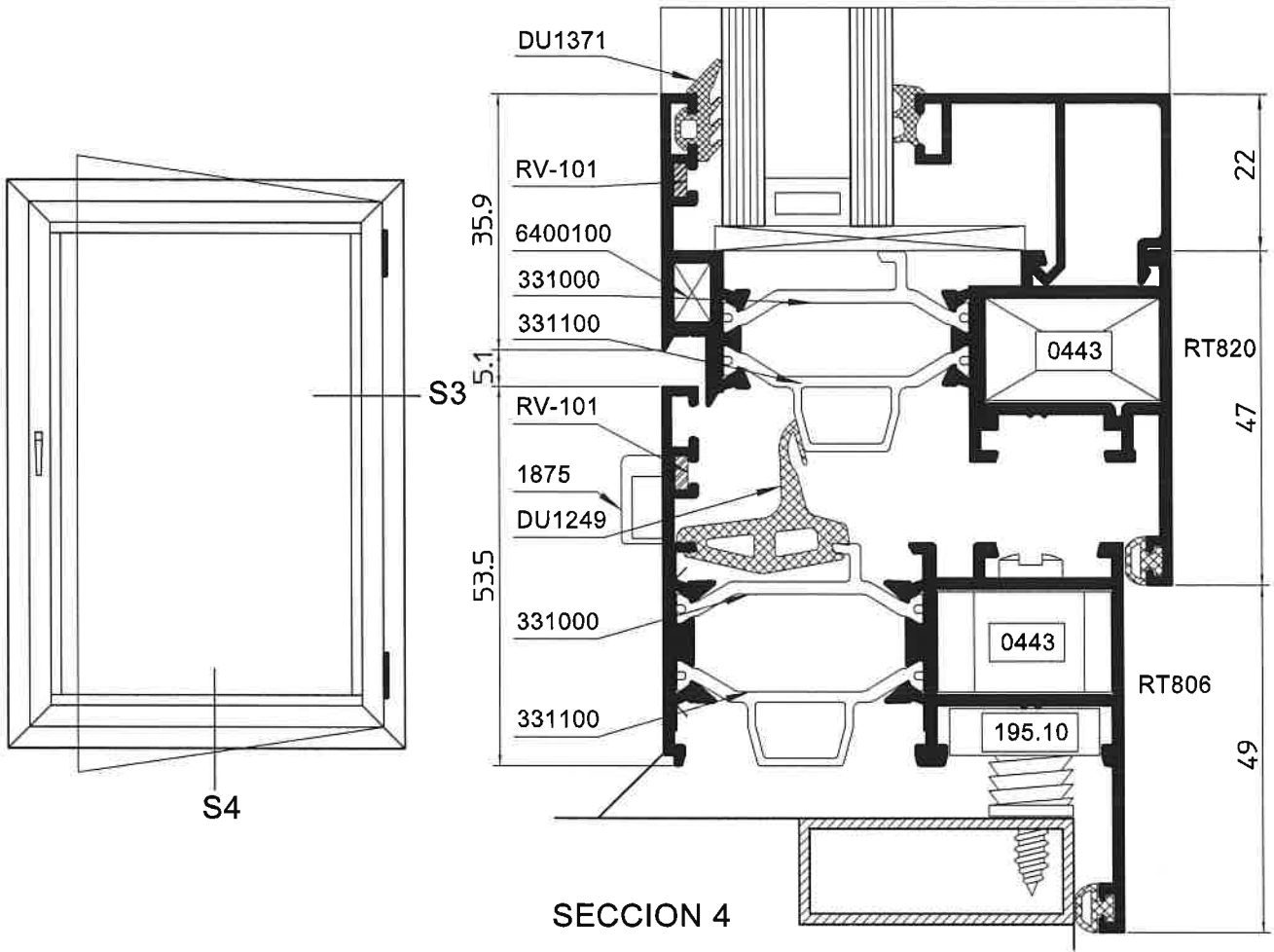
TRAVESAÑO DE 158.5 x 72

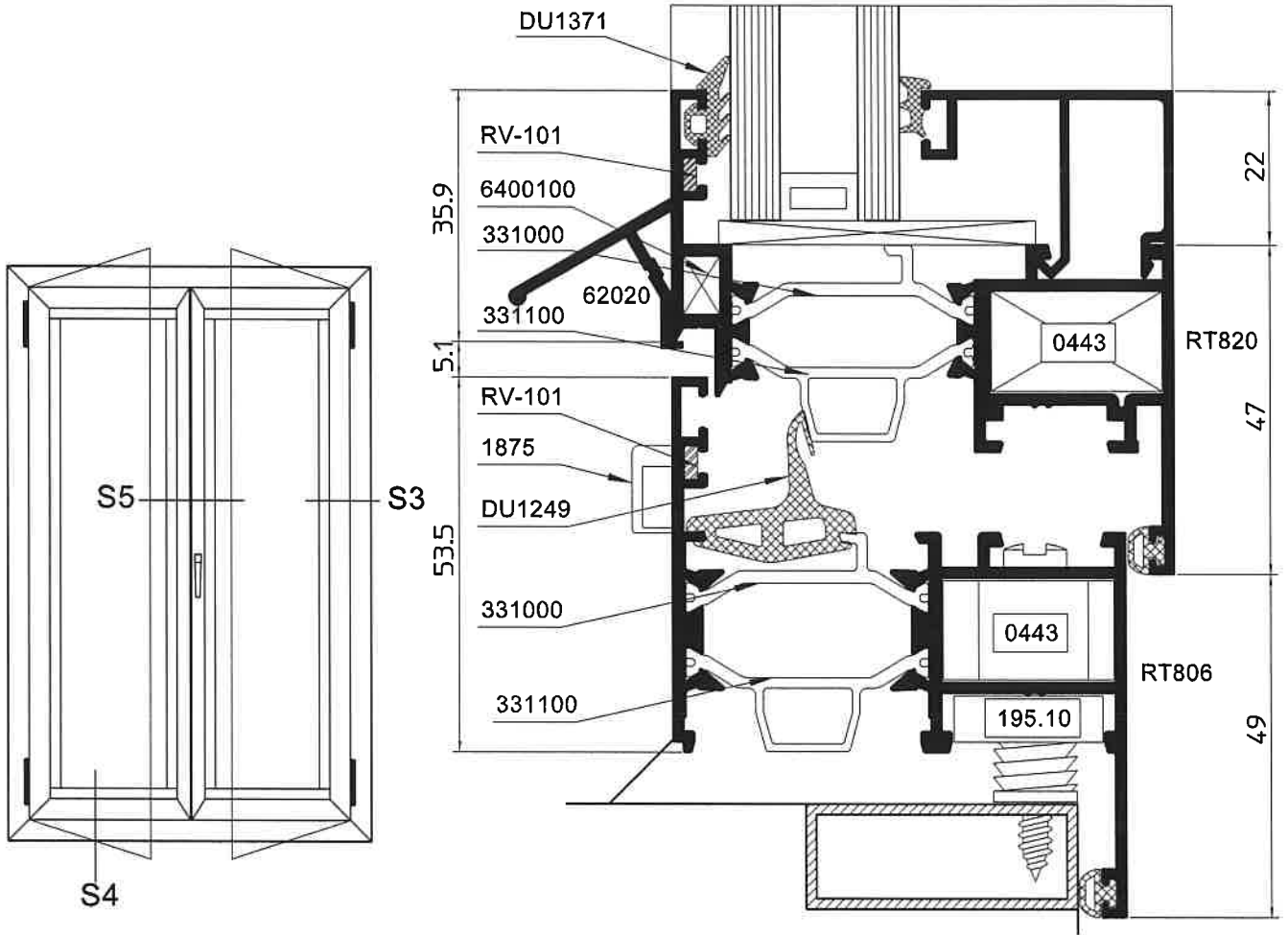




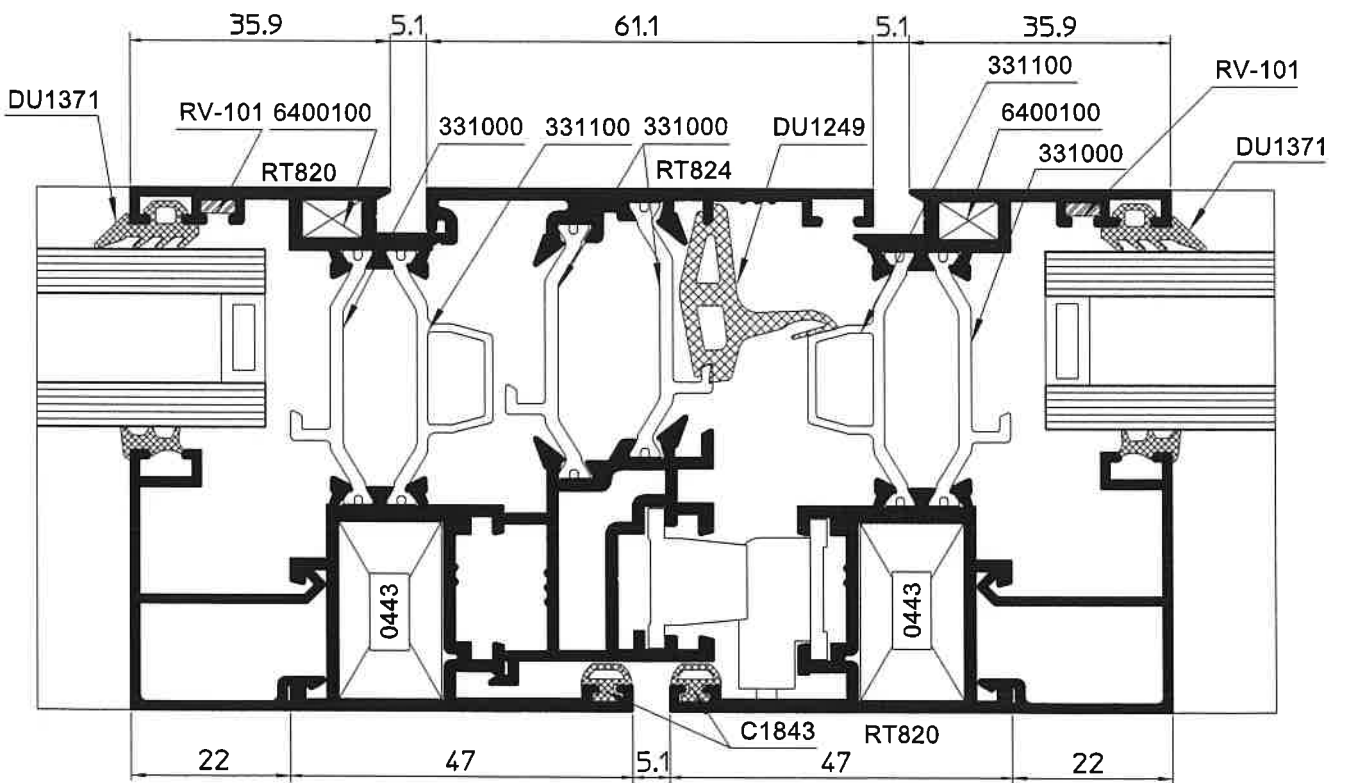






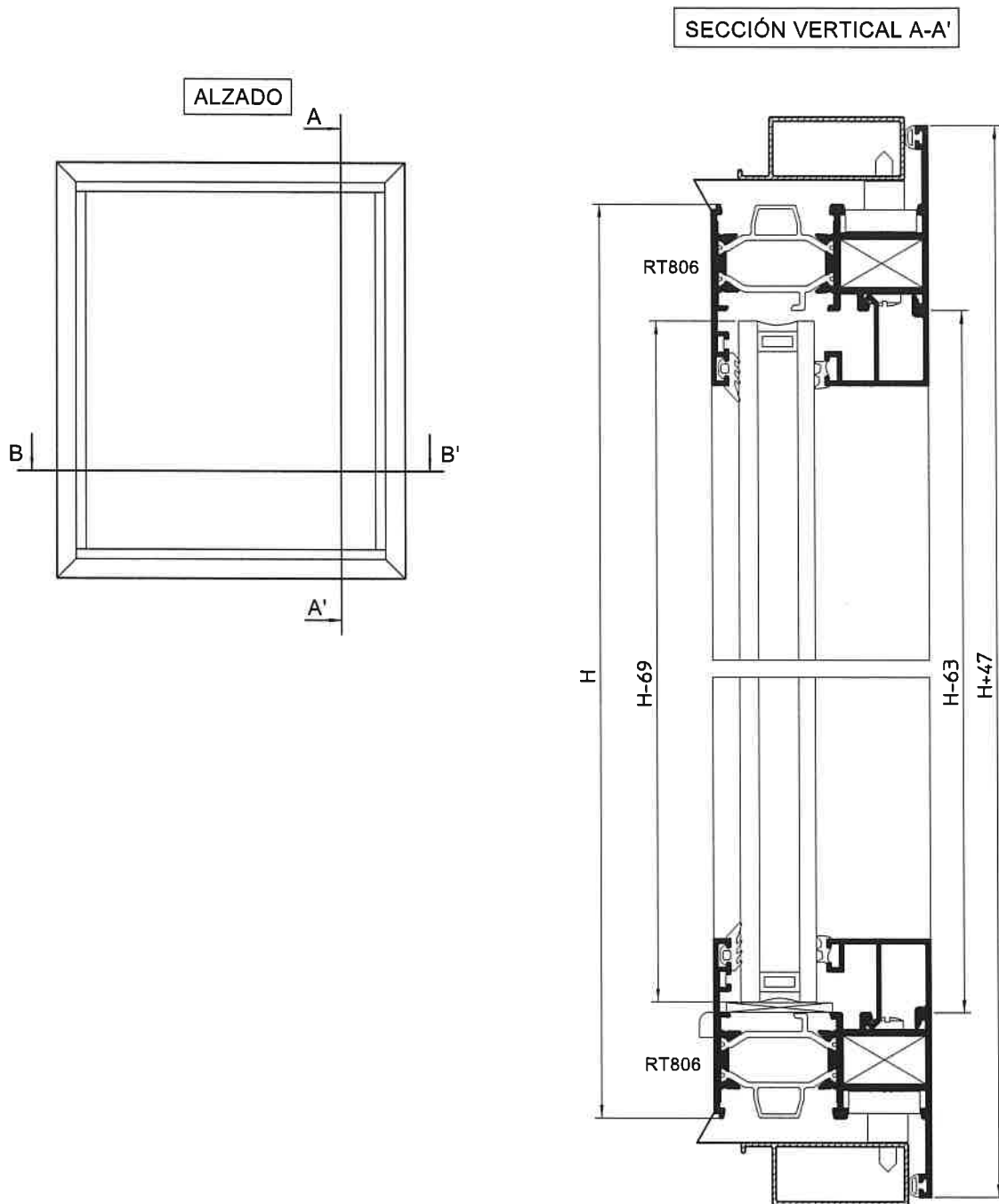


SECCION 4



SECCION 5





LISTA DE CORTE

PERFIL	DENOMINACION	UNIDADES	CORTE
RT806	Cerco con tapajuntas, (horizontal)	2	L+47
RT806	Cerco con tapajuntas, (vertical)	2	H+47
*	Junquillo (horizontal)	2	L-63
*	Junquillo (vertical)	2	H-107

* Para junquillos, ver hoja de acristalamiento. Junquillos curvos corte a inglete.

LISTA DE ACCESORIOS

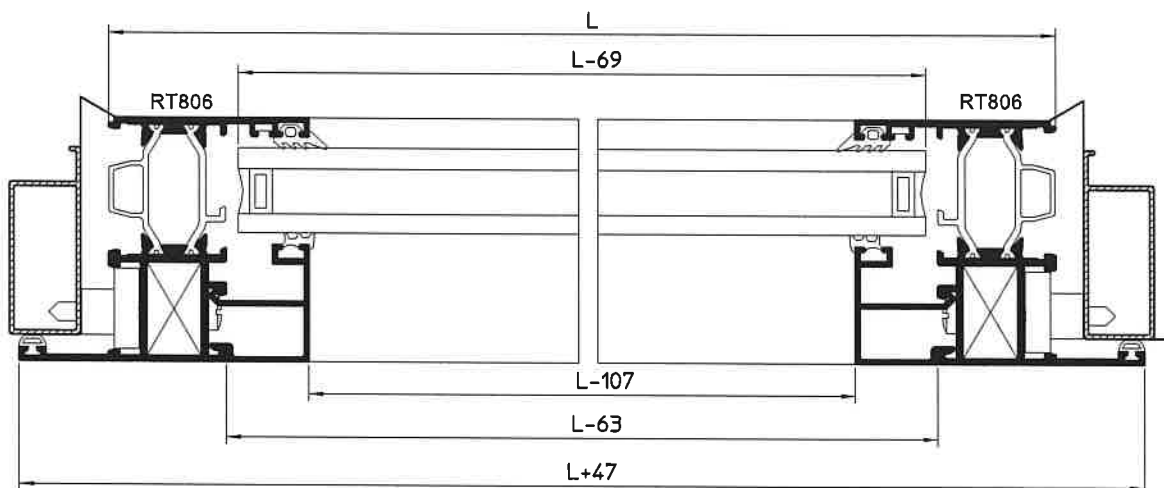
DENOMINACION	REFERENCIA	UNIDADES	DIMENSION
Escuadra mecanica 25x15	0443	4	
Escuadra alineado	RV-101	4	
Distanciador a muro	195.10	8/12	
Tapa cortavientos salida de agua	1875	2	
Burlete perimetral de tapajuntas a muro	C1843	4	2 (L-47) 2 (H-47)
Burlete acristalamiento exterior	DU1371	4	2 (L-87) 2 (H-87)
Burlete acristalamiento interior. (1)		4	2 (L-87) 2 (H-87)
* * Calzo de cristal			
Vidrio		1	(L-69) x (H-69)

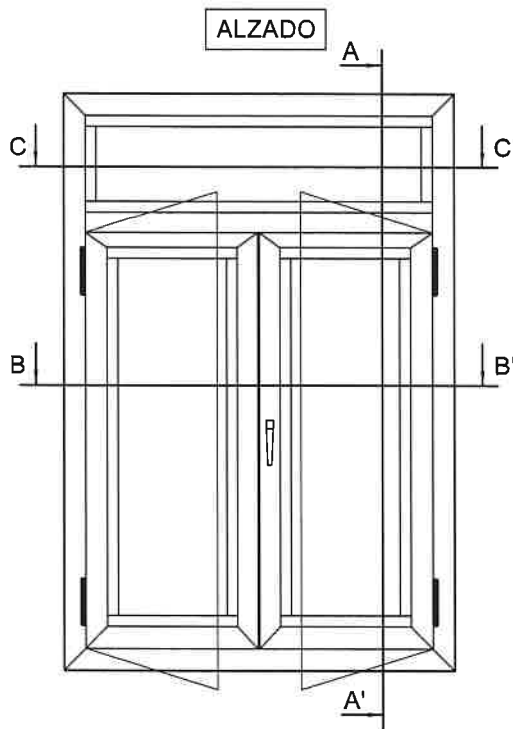
* * Para junquillos Curvos utilizar calzo de 6 mm, y reducir las dos dimensiones de vidrio 6 mm.

Utilizar clip junquillo 1175

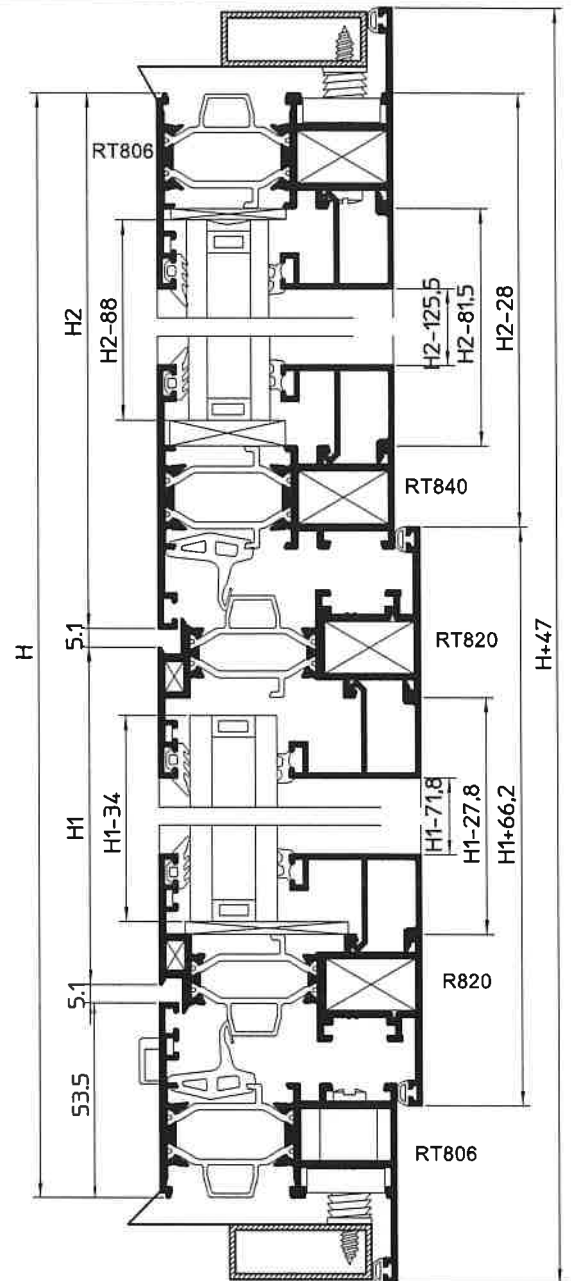
(1). Ver tabla de acristalamiento

SECCIÓN HORIZONTAL B-B'






SECCIÓN VERTICAL A-A'



PERFIL	DENOMINACION	UNIDADES	CORTE
RT806	Cerco con tapajuntas (horizontal)	2	L+47
RT806	Cerco con tapajuntas (vertical)	2	H+47
RT840	Travesaño 72x54 (horizontal)	1	L-53
*	Junquillo cerco fijo (horizontal)	2	L-63
*	Junquillo cerco fijo (vertical)	2	H2-125,5
RT820	Hoja (horizontal)	4	L/2-28
RT820	Hoja (vertical)	4	H1+66,2
RT824	Inversor hoja	1	H1
*	Junquillo hoja (horizontal)	4	L/2-122
*	Junquillo hoja (vertical)	4	H1-71,8

* Para junquillos, ver hoja de acristalamiento. Junquillos curvos corte a inglete.



LISTA DE ACCESORIOS

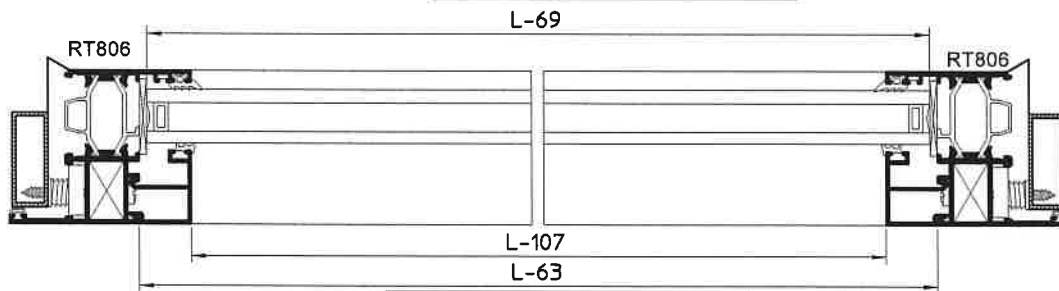
DENOMINACION	REFERENCIA	UNIDADES	DIMENSION
Escuadra mecanica 25x15	0443	12	
Escuadra alineado	RV-101	12	
Escuadra refuerzo para RT820	6400100	8	
Distanciador a muro	195.10	10/16	
Tapa cortavientos salida de agua	1875	4	
Tapa estanquidad para RT824	280.206.55	2	
Junta central cerco	DU1249	4	2 (L-133) 2 (H1-15,8)
Junta central hoja	DU1249	1	H1
Angulo vulcanizado para DU1249	DU2016	4	
Burlete perimetral de tapajuntas a muro	C1843	4	2 (L+47) 2 (H+47)
Burlete perimetral de hoja	C1843	8	4 (L/2-28) 4 (H1+66,2)
Burlete acristalamiento exterior,cerco (fijo)	DU1371	4	2 (L-87) 2 (H2-105)
Burlete acristalamiento interior, cerco (fijo). (1)		4	2 (L-87) 2 (H2-105)
Burlete acristalamiento exterior, hoja	DU1371	8	4 (L/2-146) 4 (H1-51)
Burlete acristalamiento interior, hoja. (1)		8	4 (L/2-146) 4 (H1-51)
Herrajes y bisagras (según catálogo proveedor)			
* * Calzo de cristal			
Vidrio montante		1	(L-69)x(H2-88)
Vidrio hoja		2	(L/2-128)x(H1-34)

* * Para junquillos Curvos utilizar calzo de 6 mm, y reducir las dos dimensiones de vidrio 6 mm.

Utilizar clip junquillo 1175

(1). Ver tabla de acristalamiento

SECCIÓN HORIZONTAL C-C'



SECCIÓN HORIZONTAL B-B'

